



Acalanes Union High School District

2024 Assessment Report

Part 2:

California Assessment of Student Performance and Progress
Achievement Grades
Advanced Placement Examinations

Acalanes Center for Independent Study
Acalanes High School
Campolindo High School
Las Lomas High School
Miramonte High School



2024 Assessment Report

California Assessment of Student Performance and Progress (CAASPP)

California Assessment of Student Performance and Progress (CAASPP)

AUHSD students participated in the following California Assessment of Student Performance and Progress (CAASPP) assessments during the 2023-2024 school year:

- Smarter Balanced Assessments (SBA)
 - Summative assessment of English Language Arts/Literacy (ELA) for students in grade 11
 - Summative assessment of mathematics for students in grade 11
- California Science Test (CAST) -- Given to students in grade 11 and grade 12
- California Alternate Assessments (CAA) – Given to eligible students in grade 11 for English Language Arts/Literacy (ELA), Mathematics, and Science (CAST)

All assessments were online and included a selected response test and a performance task. These assessments were aligned to the California Common Core Standards in ELA/Literacy and Mathematics. The Science test aligns with the Next Generation Science Standards. Scores are reported for ACIS, AHS, CHS, LLHS, and MHS. Scores are not reported for AUHSD-affiliated students attending a non-public school.

Smarter Balanced Assessment Results

- SBA is for grade 11 students
- Students eligible through their IEP to participate in a California Alternate Assessment do not take the SBA
- English learners who are in their first 12 months of attending a school in the United States are exempt from taking the ELA/Literacy SBA.
- Scores are reported for ACIS, AHS, CHS, LLHS and MHS. Scores are not reported for AUHSD-affiliated students attending a non-public school
- Four levels of achievement:
 - Standard Exceeded: Level 4
 - Standard Met: Level 3
 - Standard Nearly Met: Level 2
 - Standard Not Met: Level 1

AUHSD Smarter Balanced Assessment Participation Rates

Number of AUHSD Students with Scores (Smarter Balanced Assessment Participation Rate)					
2016-2017	2018-2019	2020--2021	2021-2022	2022-2023	2023-2024
ELA: 1346 (95%)	ELA: 1308 (97%)	ELA: 1090 (88%)	ELA: 1255 (95%)	ELA: 1271 (96%)	ELA: 1334 (96%)
Math: 1318 (93%)	Math: 1292 (96%)	Math: 1090 (88%)	Math: 1269 (96%)	Math: 1273 (96%)	Math: 1335 (96%)

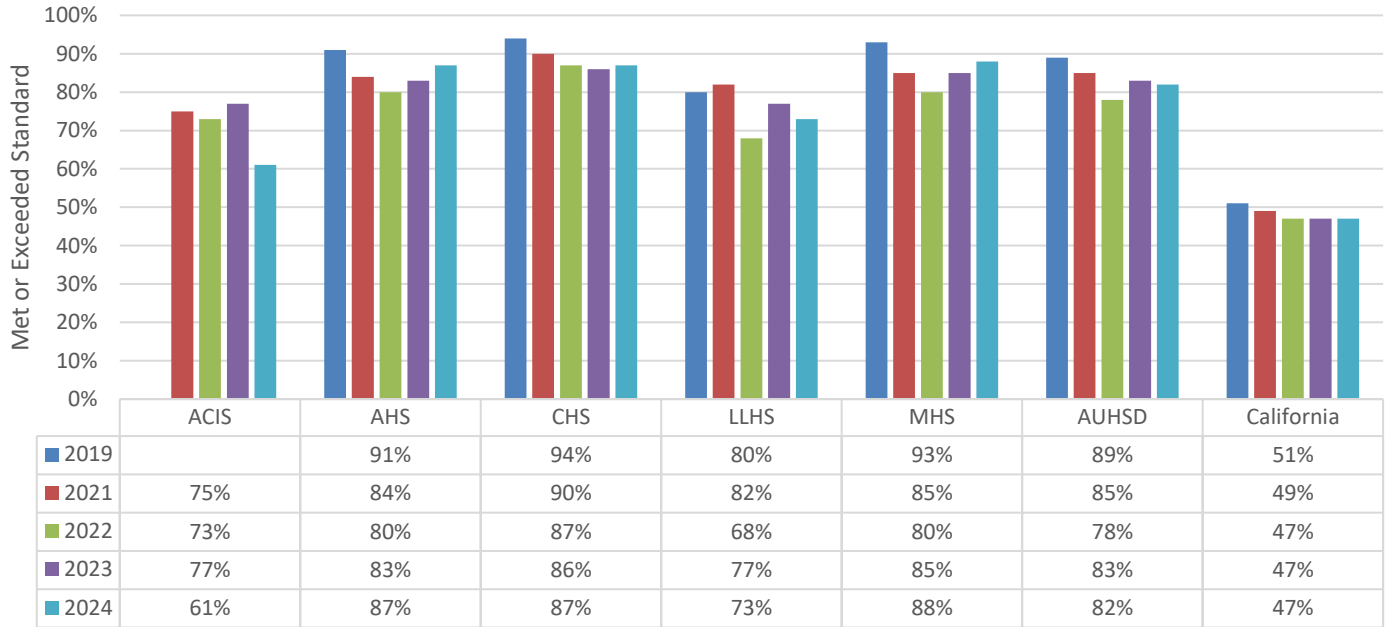
		ELA			Math		
School	Students Enrolled	Students Opted Out of Testing	Students Tested	Participation Rate	Students Opted Out of Testing	Students Tested	Participation Rate
ACIS	32	0	28	87.5%	0	29	90.6%
AHS	309	11	293	94.8%	14	289	93.5%
CHS	318	3	308	96.8%	2	309	97.2%
LLHS	426	1	421	98.8%	1	422	99.1%
MHS	299	13	284	95.0%	11	286	95.7%
Total	1384	29	1334	96.0%	29	1335	96.0%

AUHSD Smarter Balances Assessment Performance Data: School

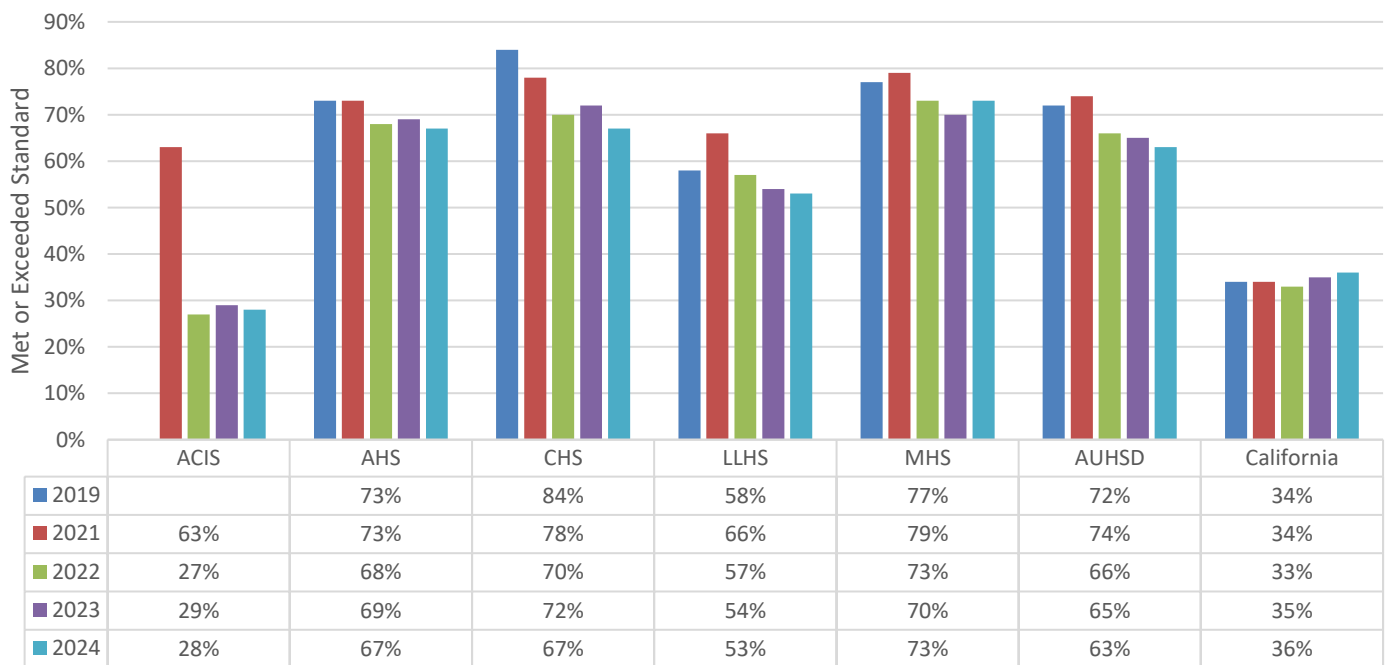
	English				Math			
	LEVEL 1	LEVEL 2	LEVEL 3	LEVEL 4	LEVEL 1	LEVEL 2	LEVEL 3	LEVEL 4
ACIS	7%	32%	43%	18%	41%	31%	21%	7%
AHS	4%	8%	29%	59%	16%	17%	29%	38%
CHS	4%	9%	36%	51%	13%	20%	26%	41%
LLHS	10%	16%	28%	45%	27%	19%	21%	32%
MHS	4%	8%	23%	65%	12%	16%	27%	46%

2024 Assessment Report

5-Year Smarter Balanced Assessment ELA Scores by School
Met or Exceeded Standard - Level 3 or 4



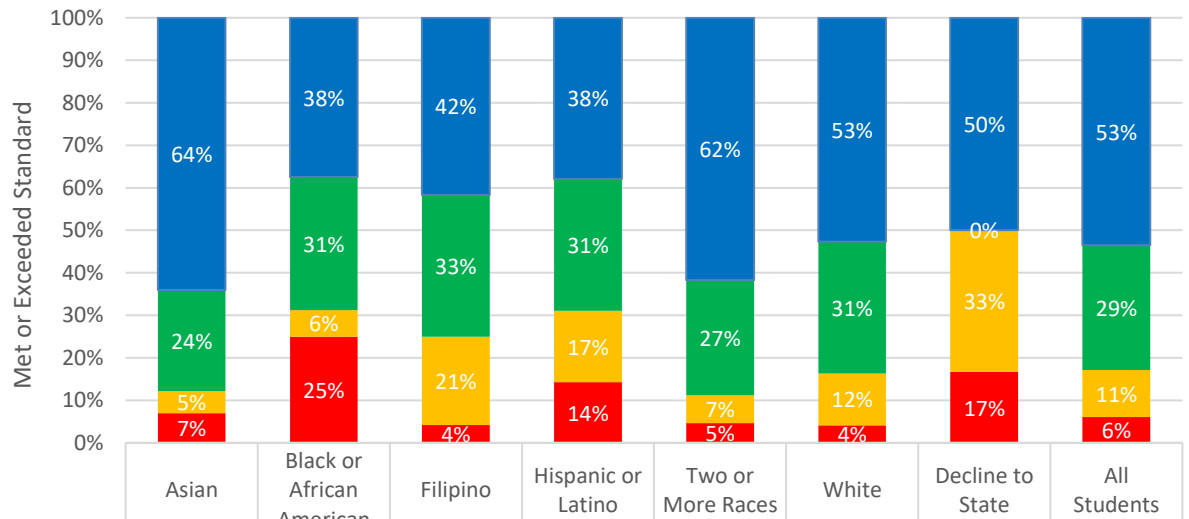
5-Year Smarter Balanced Assessment Math Scores by School
Met or Exceeded Standard - Level 3 or 4



Acalanes Union High School District

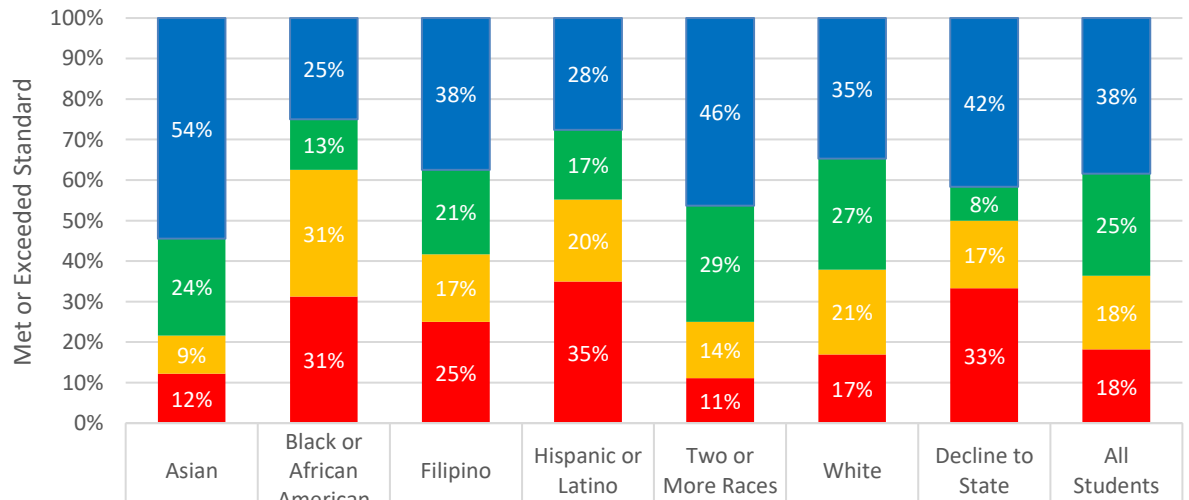
2024 Assessment Report

Smarter Balanced Assessment ELA Results by Race/Ethnicity



LEVEL 4: Standard Exceeded	64%	38%	42%	38%	62%	53%	50%	53%
LEVEL 3: Standard Met	24%	31%	33%	31%	27%	31%	0%	29%
LEVEL 2: Standard Nearly Met	5%	6%	21%	17%	7%	12%	33%	11%
LEVEL 1: Standard Not Met	7%	25%	4%	14%	5%	4%	17%	6%

Smarter Balanced Assessment Math Results by Race/Ethnicity



LEVEL 4: Standard Exceeded	54%	25%	38%	28%	46%	35%	42%	38%
LEVEL 3: Standard Met	24%	13%	21%	17%	29%	27%	8%	25%
LEVEL 2: Standard Nearly Met	9%	31%	17%	20%	14%	21%	17%	18%
LEVEL 1: Standard Not Met	12%	31%	25%	35%	11%	17%	33%	18%

2024 Assessment Report

Smarter Balanced Assessment Performance Data: Race/Ethnicity

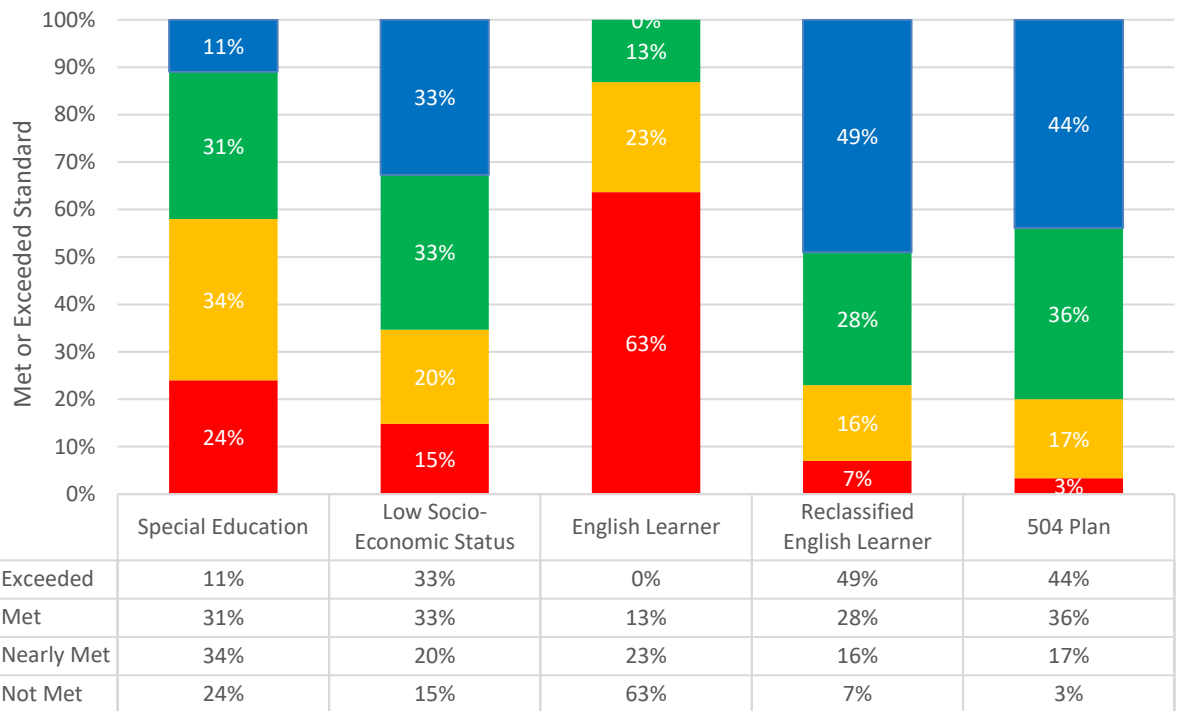
	English				Math			
	LEVEL 1	LEVEL 2	LEVEL 3	LEVEL 4	LEVEL 1	LEVEL 2	LEVEL 3	LEVEL 4
Asian	7%	5%	24%	64%	12%	9%	24%	54%
Black or African American	25%	6%	31%	38%	31%	31%	13%	25%
Filipino	4%	21%	33%	42%	25%	17%	21%	38%
Hispanic or Latino	14%	17%	31%	38%	35%	20%	17%	28%
Two or More Races	5%	7%	27%	62%	11%	14%	29%	46%
White	4%	12%	31%	53%	17%	21%	27%	35%
Decline to State	17%	33%	0%	50%	33%	17%	8%	42%

AUHSD Smarter Balances Assessment Performance Data: Race/Ethnicity by School

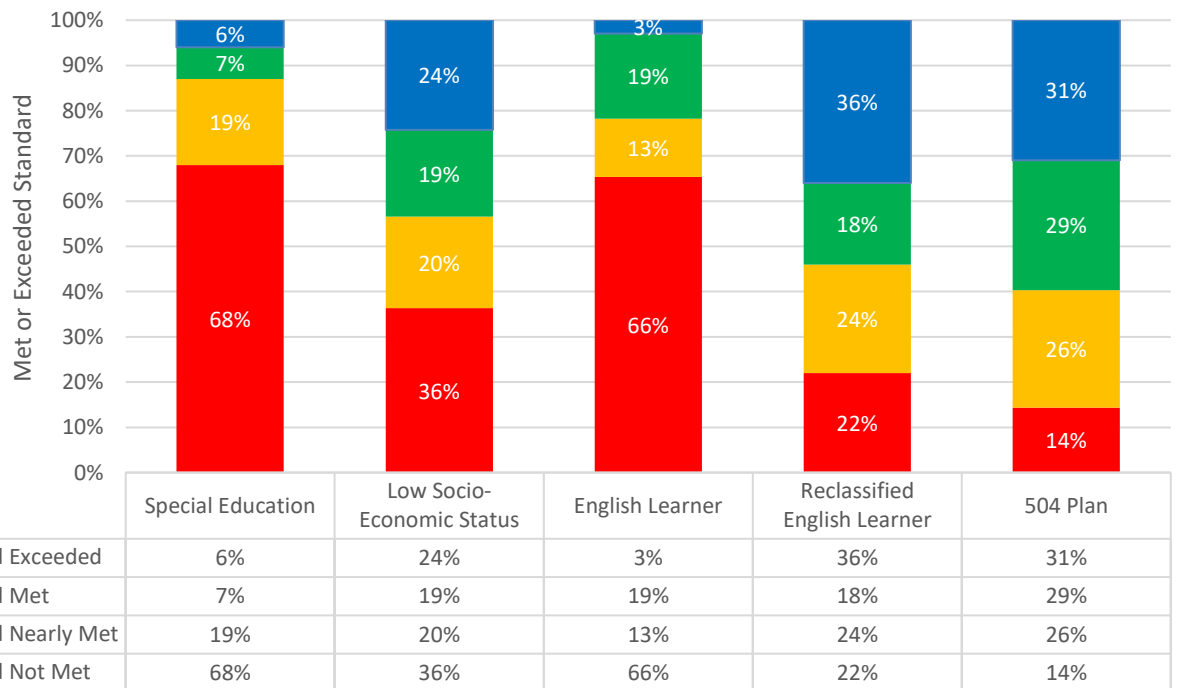
		English				Math			
		LEVEL 1	LEVEL 2	LEVEL 3	LEVEL 4	LEVEL 1	LEVEL 2	LEVEL 3	LEVEL 4
ACIS	White	0%	38%	38%	24%	38%	29%	24%	10%
AHS	Asian	6%	0%	18%	76%	6%	6%	24%	64%
	Hispanic or Latino	10%	17%	31%	41%	31%	21%	14%	34%
	Two or More Races	3%	10%	28%	59%	3%	24%	24%	48%
	White	4%	8%	30%	59%	16%	17%	35%	32%
CHS	Asian	0%	7%	28%	65%	7%	4%	26%	63%
	Hispanic or Latino	8%	12%	35%	46%	19%	19%	27%	35%
	Two or More Races	0%	4%	32%	64%	7%	14%	21%	57%
	White	6%	10%	38%	47%	15%	24%	26%	36%
LLHS	Asian	12%	6%	22%	60%	21%	9%	25%	46%
	Black or African American	50%	17%	0%	33%	67%	0%	0%	33%
	Filipino	7%	36%	21%	36%	29%	21%	14%	36%
	Hispanic or Latino	20%	20%	30%	30%	45%	21%	16%	17%
	Two or More Races	6%	6%	22%	66%	19%	9%	31%	41%
	White	6%	18%	33%	42%	24%	24%	21%	31%
	Decline to State	14%	29%	0%	57%	29%	14%	14%	43%
MHS	Asian	8%	6%	23%	63%	9%	14%	22%	55%
	Hispanic or Latino	4%	11%	30%	56%	22%	15%	15%	48%
	Two or More Races	11%	6%	28%	56%	16%	5%	42%	37%
	White	1%	9%	20%	69%	10%	16%	29%	45%

2024 Assessment Report

Smarter Balanced Assessment ELA Results by Program



Smarter Balanced Assessment Math Results by Program



2024 Assessment Report

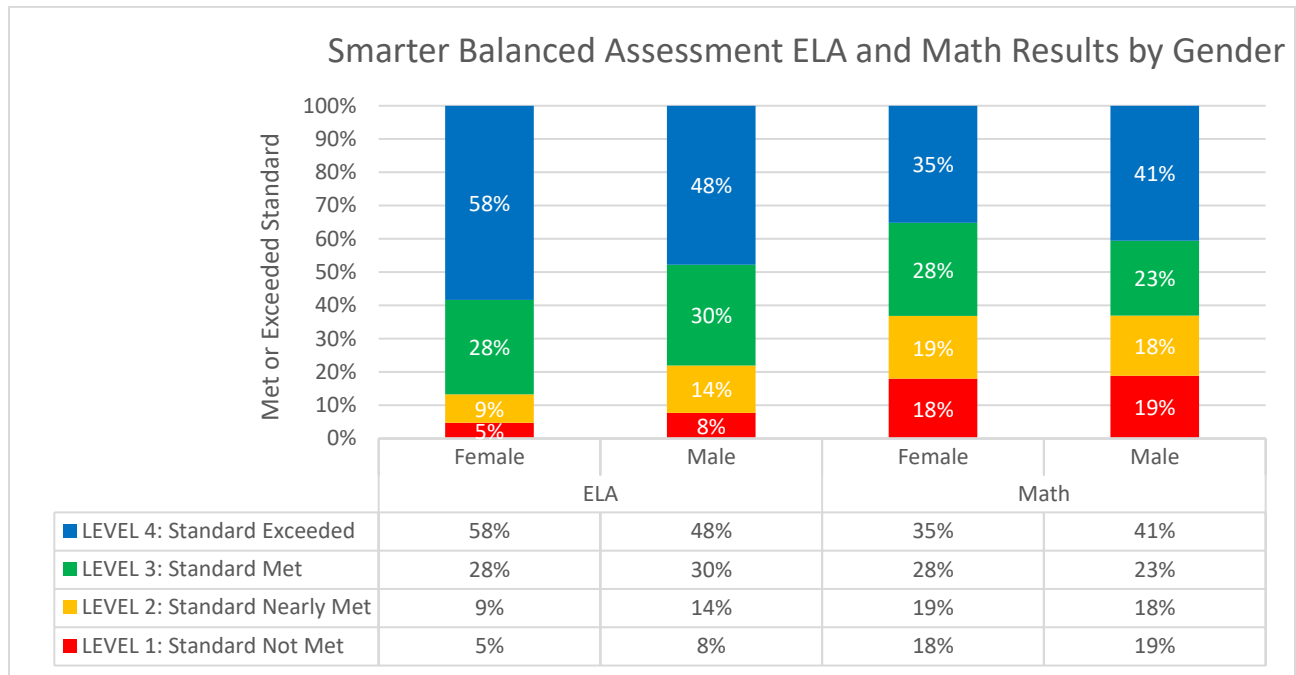
AUHSD Smarter Balances Assessment Performance Data: Program

	English				Math			
	LEVEL 1	LEVEL 2	LEVEL 3	LEVEL 4	LEVEL 1	LEVEL 2	LEVEL 3	LEVEL 4
Special Education	11%	24%	34%	31%	12%	9%	24%	54%
Low SES	15%	20%	33%	33%	31%	31%	13%	25%
EL	63%	23%	13%	0%	25%	17%	21%	38%
RFEP	35%	20%	17%	28%	35%	20%	17%	28%
504 Plan	0%	18%	45%	36%	11%	14%	29%	46%

AUHSD Smarter Balances Assessment Performance Data: Program by School

		English				Math			
		LEVEL 1	LEVEL 2	LEVEL 3	LEVEL 4	LEVEL 1	LEVEL 2	LEVEL 3	LEVEL 4
ACIS	Special Education	0%	50%	30%	20%	45%	36%	9%	9%
	Low SES	40%	20%	40%	0%	60%	40%	0%	0%
AHS	Special Education	22%	22%	39%	17%	67%	8%	19%	6%
	Low SES	9%	17%	35%	39%	30%	22%	22%	26%
	RFEP	11%	0%	39%	50%	17%	22%	28%	33%
	504 Plan	3%	16%	32%	50%	8%	24%	32%	35%
CHS	Special Education	19%	31%	44%	6%	57%	33%	0%	10%
	Low SES	6%	6%	41%	47%	22%	17%	28%	33%
	RFEP	0%	5%	30%	65%	5%	20%	20%	55%
	504 Plan	5%	11%	42%	42%	16%	26%	28%	30%
LLHS	Special Education	24%	44%	27%	5%	79%	17%	0%	5%
	Low SES	22%	29%	25%	24%	49%	22%	13%	16%
	EL	81%	19%	0%	0%	77%	9%	9%	5%
	RFEP	6%	23%	24%	47%	30%	27%	10%	33%
	504 Plan	2%	21%	33%	44%	23%	16%	28%	33%
MHS	Special Education	38%	27%	15%	19%	70%	19%	11%	0%
	Low SES	0%	21%	32%	47%	21%	5%	32%	42%
	RFEP	11%	22%	28%	39%	17%	22%	33%	28%
	504 Plan	3%	20%	33%	45%	8%	35%	28%	30%

2024 Assessment Report



AUHSD Smarter Balances Assessment Performance Data: Gender

		English				Math			
		LEVEL 1	LEVEL 2	LEVEL 3	LEVEL 4	LEVEL 1	LEVEL 2	LEVEL 3	LEVEL 4
Female		5%	9%	28%	58%	18%	19%	28%	35%
Male		8%	14%	30%	48%	19%	18%	23%	41%

AUHSD Smarter Balances Assessment Performance Data: Gender by School

		English				Math			
		LEVEL 1	LEVEL 2	LEVEL 3	LEVEL 4	LEVEL 1	LEVEL 2	LEVEL 3	LEVEL 4
ACIS	Female	0%	47%	35%	18%	44%	39%	11%	6%
	Male	18%	9%	55%	18%	36%	18%	36%	9%
AHS	Female	4%	5%	26%	65%	17%	18%	31%	35%
	Male	5%	11%	31%	53%	15%	17%	28%	41%
CHS	Female	4%	7%	35%	54%	14%	22%	27%	37%
	Male	4%	11%	38%	47%	11%	17%	25%	46%
LLHS	Female	8%	13%	27%	51%	25%	17%	27%	31%
	Male	12%	19%	29%	40%	29%	22%	16%	33%
MHS	Female	2%	2%	23%	74%	9%	16%	30%	44%
	Male	7%	13%	22%	58%	14%	15%	23%	48%



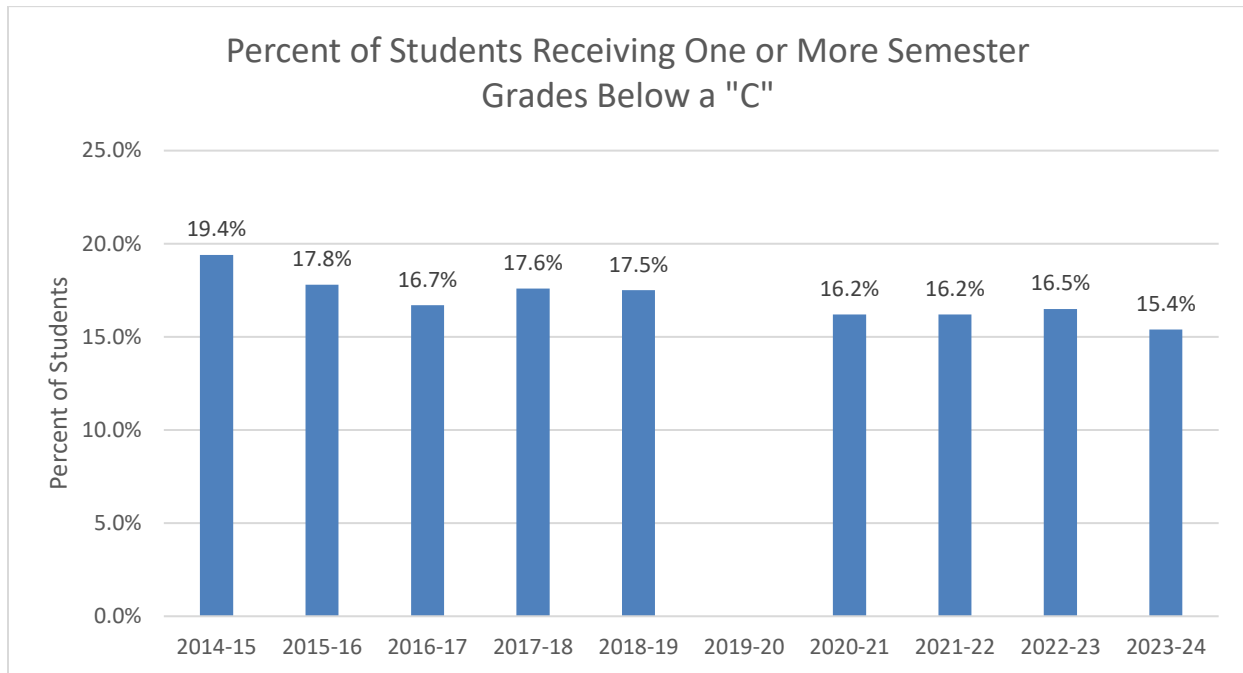
2024 Assessment Report

Achievement Grades

Achievement Grades

The table below is an overview of the number and percent of students receiving one or more semester grades below a "C".

Grades do not include Incomplete or No Mark grades. Data is for all five AUHSD schools. Student enrollment is reflective of the end-of-year enrollment.



*2019-20 grades not included as end-of year-grades were Credit or No Credit.

School Year	Total Enrollment	# of Students Receiving 1 or More Grades Below C	% of Students Receiving 1 or More Grades Below C
2023-24	5340	825	15.4%
2022-23	5332	873	16.5%
2021-22	5366	870	16.2%
2020-21	5435	881	16.2%
2019-20	5535	*End of year grades reported as Credit / No Mark	
2018-19	5548	971	17.5%
2017-18	5558	976	17.6%
2016-17	5442	909	16.7%
2015-16	5431	969	17.8%
2014-15	5298	1029	19.4%

2024 Assessment Report

Grade Distribution by School

Count and percent of semester grades earned at each school. Only courses that assign letter grades have been included in the chart.

School	A-C Grades	A-C Percent	D-F Grades	D-F Percent
ACIS	749	86.9%	113	13.1%
AHS	14569	96.3%	556	3.7%
CHS	16469	97.9%	353	2.1%
LLHS	18857	94.5%	1100	5.5%
MHS	15162	98.9%	170	1.1%

Students with Semester Grades below a "C" By Subject

Percent of students receiving semester grades below a "C" (at least one D or F) by subject area.

Department	2018-19	2020-21	2021-22	2022-23	2023-24
English	7.8%	8.0%	4.2%	6.0%	6.6%
Math	9.0%	7.8%	7.2%	9.1%	7.8%
PE	1.6%	3.8%	1.8%	1.7%	1.3%
Science	7.6%	6.7%	3.9%	6.3%	5.7%
Social Studies	8.1%	7.2%	5.0%	6.9%	6.6%
VAPA	3.1%	6.0%	2.4%	3.0%	2.4%
CTE	3.9%	9.2%	5.5%	4.8%	3.7%
World Language	4.7%	5.6%	3.4%	5.4%	4.2%

2024 Assessment Report

Grade Distribution by School and Race/Ethnicity

Count and percent of semester grades earned at each school. Only courses that assign letter grades have been included in the chart.

School	Race / Ethnicity	A-C Grades	A-C Percent	D-F Grades	D-F Percent
ACIS	Asian	71	95.9%	3	4.1%
	Black or African American	6	75.0%	2	25.0%
	Filipino	13	100.0%		0.0%
	Hispanic or Latino	64	64.6%	35	35.4%
	Two or More Races	49	81.7%	11	18.3%
	Race Intentionally Left Blank	8	100.0%		0.0%
	White	538	89.7%	62	10.3%
AHS	American Indian or Alaskan Native	14	100.0%		0.0%
	Asian	1674	98.6%	23	1.4%
	Black or African American	172	91.5%	16	8.5%
	Filipino	178	94.2%	11	5.8%
	Hawaiian or Pacific Islander	12	100.0%		0.0%
	Hispanic or Latino	1482	91.8%	132	8.2%
	Two or More Races	1379	95.1%	71	4.9%
	Race Intentionally Left Blank	120	94.5%	7	5.5%
CHS	White	9538	97.0%	296	3.0%
	American Indian or Alaskan Native	14	100.0%		0.0%
	Asian	2617	98.4%	43	1.6%
	Black or African American	140	95.9%	6	4.1%
	Filipino	314	96.3%	12	3.7%
	Hawaiian or Pacific Islander	37	94.9%	2	5.1%
	Hispanic or Latino	1427	96.0%	59	4.0%
	Two or More Races	2047	98.0%	41	2.0%
LLHS	Race Intentionally Left Blank	65	95.6%	3	4.4%
	White	9808	98.1%	187	1.9%
	American Indian or Alaskan Native	40	100.0%		0.0%
	Asian	2697	95.9%	115	4.1%
	Black or African American	491	86.4%	77	13.6%
	Filipino	536	96.8%	18	3.2%
	Hawaiian or Pacific Islander	51	82.3%	11	17.7%
	Hispanic or Latino	2923	90.1%	320	9.9%
MHS	Two or More Races	1555	95.5%	74	4.5%
	Race Intentionally Left Blank	224	89.2%	27	10.8%
	White	10340	95.8%	458	4.2%
	American Indian or Alaskan Native	22	95.7%	1	4.3%
	Asian	3246	99.2%	25	0.8%
	Black or African American	141	97.9%	3	2.1%
	Filipino	223	99.6%	1	0.4%
	Hispanic or Latino	1271	97.5%	32	2.5%
	Two or More Races	1166	98.1%	23	1.9%
	Race Intentionally Left Blank	88	96.7%	3	3.3%
	White	9005	99.1%	82	0.9%

2024 Assessment Report

Grade Distribution in English by Race/Ethnicity

Count and percent of semester grades earned at each school. Only courses that assign letter grades have been included in the chart.

Race/Ethnicity	School	A-C Grades	A-C Percent	D-F Grades	D-F Percent
American Indian or Alaskan Native	AHS	2	100.0%		0.0%
	CHS	2	100.0%		0.0%
	LLHS	6	100.0%		0.0%
	MHS	4	100.0%		0.0%
Asian	ACIS	13	92.9%	1	7.1%
	AHS	268	96.4%	10	3.6%
	CHS	406	97.8%	9	2.2%
	LLHS	489	96.6%	17	3.4%
	MHS	575	99.5%	3	0.5%
Black or African American	ACIS	1	100.0%		0.0%
	AHS	27	87.1%	4	12.9%
	CHS	23	95.8%	1	4.2%
	LLHS	79	81.4%	18	18.6%
	MHS	22	100.0%		0.0%
Filipino	ACIS	2	100.0%		0.0%
	AHS	27	84.4%	5	15.6%
	CHS	49	94.2%	3	5.8%
	LLHS	94	97.9%	2	2.1%
	MHS	38	100.0%		0.0%
Hawaiian or Pacific Islander	AHS	2	100.0%		0.0%
	CHS	5	83.3%	1	16.7%
	LLHS	9	90.0%	1	10.0%
Hispanic or Latino	ACIS	9	52.9%	8	47.1%
	AHS	220	84.9%	39	15.1%
	CHS	223	96.1%	9	3.9%
	LLHS	552	89.5%	65	10.5%
	MHS	205	96.2%	8	3.8%
Two or More Races	ACIS	10	90.9%	1	9.1%
	AHS	215	91.5%	20	8.5%
	CHS	314	97.5%	8	2.5%
	LLHS	285	96.3%	11	3.7%
	MHS	185	96.9%	6	3.1%
Race Intentionally Left Blank	AHS	14	77.8%	4	22.2%
	CHS	16	100.0%		0.0%
	LLHS	43	89.6%	5	10.4%
	MHS	16	100.0%		0.0%
White	ACIS	101	91.0%	10	9.0%
	AHS	1568	94.3%	94	5.7%
	CHS	1563	96.9%	50	3.1%
	LLHS	1830	95.7%	83	4.3%
	MHS	1491	99.1%	14	0.9%

2024 Assessment Report

Grade Distribution in Math by Race/Ethnicity

Count and percent of semester grades earned at each school. Only courses that assign letter grades have been included in the chart.

Race/Ethnicity	School	A-C Grades	A-C Percent	D-F Grades	D-F Percent
American Indian or Alaskan Native	AHS	2	100.0%		0.0%
	CHS	2	100.0%		0.0%
	LLHS	6	100.0%		0.0%
	MHS	2	66.7%	1	33.3%
Asian	ACIS	9	90.0%	1	10.0%
	AHS	257	98.1%	5	1.9%
	CHS	405	96.4%	15	3.6%
	LLHS	422	93.4%	30	6.6%
	MHS	496	98.4%	8	1.6%
Black or African American	ACIS		0.0%	1	100.0%
	AHS	27	90.0%	3	10.0%
	CHS	23	92.0%	2	8.0%
	LLHS	65	79.3%	17	20.7%
	MHS	21	95.5%	1	4.5%
Filipino	ACIS	2	100.0%		0.0%
	AHS	28	93.3%	2	6.7%
	CHS	48	94.1%	3	5.9%
	LLHS	82	96.5%	3	3.5%
	MHS	37	97.4%	1	2.6%
Hawaiian or Pacific Islander	AHS	2	100.0%		0.0%
	CHS	6	100.0%		0.0%
	LLHS	8	80.0%	2	20.0%
Hispanic or Latino	ACIS	9	64.3%	5	35.7%
	AHS	208	88.9%	26	11.1%
	CHS	211	92.5%	17	7.5%
	LLHS	413	83.8%	80	16.2%
	MHS	189	97.4%	5	2.6%
Two or More Races	ACIS	5	55.6%	4	44.4%
	AHS	211	94.2%	13	5.8%
	CHS	317	96.6%	11	3.4%
	LLHS	241	93.1%	18	6.9%
	MHS	170	97.1%	5	2.9%
Race Intentionally Left Blank	ACIS	2	100.0%		0.0%
	AHS	20	100.0%		0.0%
	CHS	6	66.7%	3	33.3%
	LLHS	37	88.1%	5	11.9%
	MHS	13	86.7%	2	13.3%
White	ACIS	72	82.8%	15	17.2%
	AHS	1436	95.4%	69	4.6%
	CHS	1559	97.0%	48	3.0%
	LLHS	1562	93.3%	113	6.7%
	MHS	1346	98.7%	18	1.3%

2024 Assessment Report

Grade Distribution in Physical Education (PE) by Race/Ethnicity

Count and percent of semester grades earned at each school. Only courses that assign letter grades have been included in the chart.

Race/Ethnicity	School	A-C Grades	A-C Percent	D-F Grades	D-F Percent
American Indian or Alaskan Native	AHS	2	100.0%		0.0%
	CHS	2	100.0%		0.0%
	MHS	2	100.0%		0.0%
Asian	AHS	124	100.0%		0.0%
	CHS	154	99.4%	1	0.6%
	LLHS	209	98.6%	3	1.4%
	MHS	167	99.4%	1	0.6%
Black or African American	AHS	16	94.1%	1	5.9%
	CHS	9	100.0%		0.0%
	LLHS	55	96.5%	2	3.5%
	MHS	11	100.0%		0.0%
Filipino	AHS	10	100.0%		0.0%
	CHS	26	100.0%		0.0%
	LLHS	49	100.0%		0.0%
	MHS	9	100.0%		0.0%
Hawaiian or Pacific Islander	CHS	4	100.0%		0.0%
	LLHS	6	100.0%		0.0%
Hispanic or Latino	AHS	121	97.6%	3	2.4%
	CHS	95	96.9%	3	3.1%
	LLHS	275	97.9%	6	2.1%
	MHS	81	100.0%		0.0%
Two or More Races	AHS	105	100.0%		0.0%
	CHS	144	100.0%		0.0%
	LLHS	134	100.0%		0.0%
	MHS	88	100.0%		0.0%
Race Intentionally Left Blank	AHS	12	100.0%		0.0%
	CHS	8	100.0%		0.0%
	LLHS	20	100.0%		0.0%
	MHS	4	100.0%		0.0%
White	AHS	611	99.5%	3	0.5%
	CHS	608	97.9%	13	2.1%
	LLHS	858	99.3%	6	0.7%
	MHS	521	99.8%	1	0.2%

2024 Assessment Report

Grade Distribution in Science by Race/Ethnicity

Count and percent of semester grades earned at each school. Only courses that assign letter grades have been included in the chart.

Race/Ethnicity	School	A-C Grades	A-C Percent	D-F Grades	D-F Percent
American Indian or Alaskan Native	AHS	2	100.0%		0.0%
	CHS	2	100.0%		0.0%
	LLHS	12	100.0%		0.0%
	MHS	2	100.0%		0.0%
Asian	ACIS	7	100.0%		0.0%
	AHS	272	99.6%	1	0.4%
	CHS	446	99.3%	3	0.7%
	LLHS	453	95.0%	24	5.0%
	MHS	566	98.8%	7	1.2%
Black or African American	AHS	29	96.7%	1	3.3%
	CHS	17	85.0%	3	15.0%
	LLHS	67	87.0%	10	13.0%
	MHS	21	95.5%	1	4.5%
Filipino	ACIS	2	100.0%		0.0%
	AHS	22	84.6%	4	15.4%
	CHS	47	97.9%	1	2.1%
	LLHS	79	94.0%	5	6.0%
	MHS	40	100.0%		0.0%
Hawaiian or Pacific Islander	AHS	4	100.0%		0.0%
	CHS	6	100.0%		0.0%
	LLHS	4	50.0%	4	50.0%
Hispanic or Latino	ACIS	5	55.6%	4	44.4%
	AHS	211	93.4%	15	6.6%
	CHS	223	93.3%	16	6.7%
	LLHS	371	86.1%	60	13.9%
	MHS	191	97.4%	5	2.6%
Two or More Races	ACIS	7	77.8%	2	22.2%
	AHS	217	97.3%	6	2.7%
	CHS	328	98.5%	5	1.5%
	LLHS	227	94.2%	14	5.8%
	MHS	190	99.0%	2	1.0%
Race Intentionally Left Blank	ACIS	2	100.0%		0.0%
	AHS	16	100.0%		0.0%
	CHS	8	100.0%		0.0%
	LLHS	29	80.6%	7	19.4%
	MHS	18	100.0%		0.0%
White	ACIS	37	80.4%	9	19.6%
	AHS	1505	98.4%	25	1.6%
	CHS	1529	98.0%	31	2.0%
	LLHS	1484	94.4%	88	5.6%
	MHS	1356	99.1%	13	0.9%

2024 Assessment Report

Grade Distribution in Social Studies by Race/Ethnicity

Count and percent of semester grades earned at each school. Only courses that assign letter grades have been included in the chart.

Race/Ethnicity	School	A-C Grades	A-C Percent	D-F Grades	D-F Percent
American Indian or Alaskan Native	AHS	2	100.0%		0.0%
	CHS	2	100.0%		0.0%
	LLHS	8	100.0%		0.0%
	MHS	4	100.0%		0.0%
Asian	ACIS	9	100.0%		0.0%
	AHS	238	98.3%	4	1.7%
	CHS	396	98.0%	8	2.0%
	LLHS	401	94.4%	24	5.6%
	MHS	514	99.2%	4	0.8%
Black or African American	ACIS	1	50.0%	1	50.0%
	AHS	24	92.3%	2	7.7%
	CHS	24	100.0%		0.0%
	LLHS	47	73.4%	17	26.6%
	MHS	20	100.0%		0.0%
Filipino	ACIS	2	100.0%		0.0%
	AHS	24	100.0%		0.0%
	CHS	48	98.0%	1	2.0%
	LLHS	84	93.3%	6	6.7%
	MHS	36	100.0%		0.0%
Hawaiian or Pacific Islander	AHS	2	100.0%		0.0%
	CHS	2	100.0%		0.0%
	LLHS	6	85.7%	1	14.3%
Hispanic or Latino	ACIS	8	40.0%	12	60.0%
	AHS	197	91.6%	18	8.4%
	CHS	220	98.2%	4	1.8%
	LLHS	407	85.3%	70	14.7%
	MHS	199	96.6%	7	3.4%
Two or More Races	ACIS	8	80.0%	2	20.0%
	AHS	211	96.3%	8	3.7%
	CHS	297	98.0%	6	2.0%
	LLHS	246	93.2%	18	6.8%
	MHS	150	96.2%	6	3.8%
Race Intentionally Left Blank	ACIS	2	100.0%		0.0%
	AHS	17	94.4%	1	5.6%
	CHS	8	100.0%		0.0%
	LLHS	31	81.6%	7	18.4%
	MHS	8	100.0%		0.0%
White	ACIS	84	88.4%	11	11.6%
	AHS	1527	96.9%	49	3.1%
	CHS	1594	98.6%	23	1.4%
	LLHS	1598	94.3%	96	5.7%
	MHS	1462	98.3%	26	1.7%

2024 Assessment Report

Grade Distribution in Visual and Performing Arts (VAPA) by Race/Ethnicity

Count and percent of semester grades earned at each school. Only courses that assign letter grades have been included in the chart.

Race/Ethnicity	School	A-C Grades	A-C Percent	D-F Grades	D-F Percent
American Indian or Alaskan Native	AHS	2	100.0%		0.0%
	CHS	2	100.0%		0.0%
	LLHS	4	100.0%		0.0%
	MHS	4	100.0%		0.0%
Asian	ACIS	9	90.0%	1	10.0%
	AHS	177	99.4%	1	0.6%
	CHS	246	100.0%		0.0%
	LLHS	207	97.2%	6	2.8%
	MHS	232	100.0%		0.0%
Black or African American	AHS	21	91.3%	2	8.7%
	CHS	12	100.0%		0.0%
	LLHS	46	93.9%	3	6.1%
	MHS	14	100.0%		0.0%
Filipino	ACIS	1	100.0%		0.0%
	AHS	20	100.0%		0.0%
	CHS	40	100.0%		0.0%
	LLHS	41	100.0%		0.0%
	MHS	12	100.0%		0.0%
Hawaiian or Pacific Islander	CHS	4	100.0%		0.0%
	LLHS	9	100.0%		0.0%
Hispanic or Latino	ACIS	4	80.0%	1	20.0%
	AHS	139	96.5%	5	3.5%
	CHS	164	100.0%		0.0%
	LLHS	247	96.1%	10	3.9%
	MHS	128	99.2%	1	0.8%
Two or More Races	ACIS	4	66.7%	2	33.3%
	AHS	138	96.5%	5	3.5%
	CHS	244	99.6%	1	0.4%
	LLHS	115	98.3%	2	1.7%
	MHS	121	99.2%	1	0.8%
Race Intentionally Left Blank	AHS	16	100.0%		0.0%
	CHS	6	100.0%		0.0%
	LLHS	13	100.0%		0.0%
	MHS	8	100.0%		0.0%
White	ACIS	23	76.7%	7	23.3%
	AHS	840	98.4%	14	1.6%
	CHS	1015	99.7%	3	0.3%
	LLHS	771	98.2%	14	1.8%
	MHS	814	99.6%	3	0.4%

2024 Assessment Report

Grade Distribution in Career Technical Education (CTE) by Race/Ethnicity

Count and percent of semester grades earned at each school. Only courses that assign letter grades have been included in the chart.

Race/Ethnicity	School	A-C Grades	A-C Percent	D-F Grades	D-F Percent
Asian	ACIS	3	100.0%		0.0%
	AHS	15	100.0%		0.0%
	CHS	37	97.4%	1	2.6%
	LLHS	76	100.0%		0.0%
	MHS	54	100.0%		0.0%
Black or African American	AHS	4	100.0%		0.0%
	CHS	4	100.0%		0.0%
	LLHS	30	100.0%		0.0%
	MHS	2	100.0%		0.0%
Filipino	AHS	2	100.0%		0.0%
	CHS	6	100.0%		0.0%
	LLHS	24	100.0%		0.0%
	MHS	6	100.0%		0.0%
Hawaiian or Pacific Islander	CHS	2	100.0%		0.0%
	LLHS	2	100.0%		0.0%
Hispanic or Latino	AHS	39	83.0%	8	17.0%
	CHS	41	100.0%		0.0%
	LLHS	123	95.3%	6	4.7%
	MHS	32	100.0%		0.0%
Two or More Races	ACIS	6	100.0%		0.0%
	AHS	17	77.3%	5	22.7%
	CHS	48	100.0%		0.0%
	LLHS	35	100.0%		0.0%
	MHS	17	100.0%		0.0%
Race Intentionally Left Blank	LLHS	4	100.0%		0.0%
White	ACIS	13	76.5%	4	23.5%
	AHS	238	95.2%	12	4.8%
	CHS	264	100.0%		0.0%
	LLHS	430	98.9%	5	1.1%
	MHS	187	100.0%		0.0%

2024 Assessment Report

Grade Distribution in World Languages by Race/Ethnicity

Count and percent of semester grades earned at each school. Only courses that assign letter grades have been included in the chart.

Race/Ethnicity	School	A-C Grades	A-C Percent	D-F Grades	D-F Percent
American Indian or Alaskan Native	AHS	2	100.0%		0.0%
	CHS	2	100.0%		0.0%
	LLHS	4	100.0%		0.0%
	MHS	2	100.0%		0.0%
Asian	AHS	189	100.0%		0.0%
	CHS	293	100.0%		0.0%
	LLHS	287	96.6%	10	3.4%
	MHS	374	99.5%	2	0.5%
Black or African American	AHS	14	82.4%	3	17.6%
	CHS	10	100.0%		0.0%
	LLHS	47	85.5%	8	14.5%
	MHS	14	93.3%	1	6.7%
Filipino	ACIS	2	100.0%		0.0%
	AHS	20	100.0%		0.0%
	CHS	34	91.9%	3	8.1%
	LLHS	60	96.8%	2	3.2%
	MHS	26	100.0%		0.0%
Hawaiian or Pacific Islander	CHS	4	80.0%	1	20.0%
	LLHS	6	75.0%	2	25.0%
Hispanic or Latino	ACIS	5	83.3%	1	16.7%
	AHS	159	94.1%	10	5.9%
	CHS	134	94.4%	8	5.6%
	LLHS	305	95.0%	16	5.0%
	MHS	137	95.8%	6	4.2%
Two or More Races	ACIS	2	100.0%		0.0%
	AHS	129	94.9%	7	5.1%
	CHS	190	95.0%	10	5.0%
	LLHS	172	95.0%	9	5.0%
	MHS	143	97.9%	3	2.1%
Race Intentionally Left Blank	AHS	12	85.7%	2	14.3%
	CHS	4	100.0%		0.0%
	LLHS	26	96.3%	1	3.7%
	MHS	9	100.0%		0.0%
White	ACIS	37	100.0%		0.0%
	AHS	824	97.4%	22	2.6%
	CHS	766	98.6%	11	1.4%
	LLHS	1021	96.0%	43	4.0%
	MHS	1038	99.6%	4	0.4%

2024 Assessment Report

Grade Distribution by School and Program

Count and percent of semester grades earned at each school. Only courses that assign letter grades have been included in the chart.

School	Program	A-C Grades	A-C Percent	D-F Grades	D-F Percent
ACIS	504 Plan	134	96.4%	5	3.6%
	Special Education	379	82.9%	78	17.1%
	English Learner	2	100.0%		0.0%
	Reclassified English Learner	31	91.2%	3	8.8%
	Low Socio-Economic Status	13	72.2%	5	27.8%
AHS	504 Plan	1693	96.4%	63	3.6%
	Special Education	1478	87.6%	209	12.4%
	English Learner	223	82.0%	49	18.0%
	Reclassified English Learner	902	96.1%	37	3.9%
	Low Socio-Economic Status e	112	86.8%	17	13.2%
CHS	504 Plan	2434	97.6%	60	2.4%
	Special Education	1721	92.6%	138	7.4%
	English Learner	109	91.6%	10	8.4%
	Reclassified English Learner	977	96.3%	38	3.7%
	Low Socio-Economic Status	77	100%		0.0%
LLHS	504 Plan	1733	92.1%	149	7.9%
	Special Education	1708	86.9%	258	13.1%
	English Learner	859	76.6%	263	23.4%
	Reclassified English Learner	2766	93.4%	196	6.6%
	Low Socio-Economic Status	220	72.1%	85	27.9%
MHS	504 Plan	1775	99.2%	15	0.8%
	Special Education	1416	94.1%	89	5.9%
	English Learner	84	100.0%		0.0%
	Reclassified English Learner	783	97.9%	17	2.1%
	Low Socio-Economic Status	65	98.5%	1	1.5%

2024 Assessment Report

Grade Distribution in English by Program

Count and percent of semester grades earned at each school. Only courses that assign letter grades have been included in the chart.

Program	School	A-C Grades	A-C Percent	D-F Grades	D-F Percent
504	ACIS	27	96.4%	1	3.6%
	AHS	268	93.1%	20	6.9%
	CHS	392	96.6%	14	3.4%
	LLHS	349	93.8%	23	6.2%
	MHS	303	100.0%		0.0%
Special Education	ACIS	66	85.7%	11	14.3%
	AHS	213	79.5%	55	20.5%
	CHS	245	86.6%	38	13.4%
	LLHS	285	85.6%	48	14.4%
	MHS	205	90.3%	22	9.7%
English Learner	AHS	49	71.0%	20	29.0%
	CHS	29	90.6%	3	9.4%
	LLHS	232	75.1%	77	24.9%
	MHS	22	100.0%		0.0%
Reclassified English Learner	ACIS	3	100.0%		0.0%
	AHS	134	89.3%	16	10.7%
	CHS	146	93.6%	10	6.4%
	LLHS	473	93.8%	31	6.2%
	MHS	126	98.4%	2	1.6%
Low Socioeconomic Status	ACIS	2	50.0%	2	50.0%
	AHS	19	82.6%	4	17.4%
	CHS	14	100.0%		0.0%
	LLHS	49	64.5%	27	35.5%
	MHS	14	100.0%		0.0%

2024 Assessment Report

Grade Distribution in Math by Program

Count and percent of semester grades earned at each school. Only courses that assign letter grades have been included in the chart.

Program	School	A-C Grades	A-C Percent	D-F Grades	D-F Percent
504	ACIS	19	95.0%	1	5.0%
	AHS	251	93.0%	19	7.0%
	CHS	380	95.0%	20	5.0%
	LLHS	253	87.8%	35	12.2%
	MHS	271	98.9%	3	1.1%
Special Education	ACIS	47	73.4%	17	26.6%
	AHS	198	83.5%	39	16.5%
	CHS	242	89.0%	30	11.0%
	LLHS	212	75.7%	68	24.3%
	MHS	187	90.3%	20	9.7%
English Learner	AHS	34	85.0%	6	15.0%
	CHS	12	66.7%	6	33.3%
	LLHS	118	69.8%	51	30.2%
	MHS	14	100.0%		0.0%
Reclassified English Learner	ACIS	4	66.7%	2	33.3%
	AHS	133	93.7%	9	6.3%
	CHS	151	94.4%	9	5.6%
	LLHS	415	88.7%	53	11.3%
	MHS	116	95.9%	5	4.1%
Low Socioeconomic Status	ACIS	2	100.0%		0.0%
	AHS	16	88.9%	2	11.1%
	CHS	12	100.0%		0.0%
	LLHS	26	59.1%	18	40.9%
	MHS	12	100.0%		0.0%

2024 Assessment Report

Grade Distribution in Physical Education (PE) by Program

Count and percent of semester grades earned at each school. Only courses that assign letter grades have been included in the chart.

Program	School	A-C Grades	A-C Percent	D-F Grades	D-F Percent
504	AHS	105	99.1%	1	0.9%
	CHS	143	97.9%	3	2.1%
	LLHS	154	100.0%		0.0%
	MHS	99	99.0%	1	1.0%
Special Education	AHS	112	97.4%	3	2.6%
	CHS	107	89.2%	13	10.8%
	LLHS	165	96.5%	6	3.5%
	MHS	101	99.0%	1	1.0%
English Learner	AHS	25	100.0%		0.0%
	CHS	13	100.0%		0.0%
	LLHS	107	95.5%	5	4.5%
	MHS	3	100.0%		0.0%
Reclassified English Learner	AHS	64	100.0%		0.0%
	CHS	82	98.8%	1	1.2%
	LLHS	229	98.3%	4	1.7%
	MHS	51	98.1%	1	1.9%
Low Socioeconomic Status	AHS	10	100.0%		0.0%
	CHS	8	100.0%		0.0%
	LLHS	28	84.8%	5	15.2%
	MHS	7	100.0%		0.0%

2024 Assessment Report

Grade Distribution in Science by Program

Count and percent of semester grades earned at each school. Only courses that assign letter grades have been included in the chart.

Program	School	A-C Grades	A-C Percent	D-F Grades	D-F Percent
504	ACIS	10	90.9%	1	9.1%
	AHS	281	98.3%	5	1.7%
	CHS	384	98.0%	8	2.0%
	LLHS	224	87.2%	33	12.8%
	MHS	277	98.6%	4	1.4%
Special Education	ACIS	33	73.3%	12	26.7%
	AHS	161	88.0%	22	12.0%
	CHS	185	89.4%	22	10.6%
	LLHS	162	81.8%	36	18.2%
	MHS	158	94.6%	9	5.4%
English Learner	AHS	28	82.4%	6	17.6%
	CHS	17	94.4%	1	5.6%
	LLHS	84	66.7%	42	33.3%
	MHS	8	100.0%		0.0%
Reclassified English Learner	ACIS	4	100.0%		0.0%
	AHS	137	96.5%	5	3.5%
	CHS	140	96.6%	5	3.4%
	LLHS	429	91.3%	41	8.7%
	MHS	127	95.5%	6	4.5%
Low Socioeconomic Status	AHS	16	80.0%	4	20.0%
	CHS	10	100.0%		0.0%
	LLHS	23	69.7%	10	30.3%
	MHS	7	87.5%	1	12.5%

2024 Assessment Report

Grade Distribution in Social Studies by Program

Count and percent of semester grades earned at each school. Only courses that assign letter grades have been included in the chart.

Program	School	A-C Grades	A-C Percent	D-F Grades	D-F Percent
504	ACIS	24	96.0%	1	4.0%
	AHS	286	97.6%	7	2.4%
	CHS	409	99.5%	2	0.5%
	LLHS	257	89.5%	30	10.5%
	MHS	295	97.7%	7	2.3%
Special Education	ACIS	44	71.0%	18	29.0%
	AHS	201	86.3%	32	13.7%
	CHS	197	90.4%	21	9.6%
	LLHS	175	75.4%	57	24.6%
	MHS	167	87.9%	23	12.1%
English Learner	ACIS	2	100.0%		0.0%
	AHS	17	68.0%	8	32.0%
	CHS	8	100.0%		0.0%
	LLHS	69	51.9%	64	48.1%
	MHS	11	100.0%		0.0%
Reclassified English Learner	ACIS	3	100.0%		0.0%
	AHS	125	98.4%	2	1.6%
	CHS	132	95.7%	6	4.3%
	LLHS	401	89.9%	45	10.1%
	MHS	119	98.3%	2	1.7%
Low Socioeconomic Status	ACIS	4	57.1%	3	42.9%
	AHS	10	76.9%	3	23.1%
	CHS	12	100.0%		0.0%
	LLHS	30	63.8%	17	36.2%
	MHS	10	100.0%		0.0%

2024 Assessment Report

Grade Distribution in Visual and Performing Arts (VAPA) by Program

Count and percent of semester grades earned at each school. Only courses that assign letter grades have been included in the chart.

Program	School	A-C Grades	A-C Percent	D-F Grades	D-F Percent
504	ACIS	7	100.0%		0.0%
	AHS	187	100.0%		0.0%
	CHS	293	99.3%	2	0.7%
	LLHS	158	99.4%	1	0.6%
	MHS	182	100.0%		0.0%
Special Education	ACIS	22	66.7%	11	33.3%
	AHS	141	91.0%	14	9.0%
	CHS	174	98.9%	2	1.1%
	LLHS	109	87.9%	15	12.1%
	MHS	145	97.3%	4	2.7%
English Learner	AHS	21	91.3%	2	8.7%
	CHS	10	100.0%		0.0%
	LLHS	79	85.9%	13	14.1%
	MHS	14	100.0%		0.0%
Reclassified English Learner	ACIS	4	100.0%		0.0%
	AHS	89	100.0%		0.0%
	CHS	97	100.0%		0.0%
	LLHS	200	97.1%	6	2.9%
	MHS	71	100.0%		0.0%
Low Socioeconomic Status	AHS	10	83.3%	2	16.7%
	CHS	8	100.0%		0.0%
	LLHS	17	85.0%	3	15.0%
	MHS	4	100.0%		0.0%

2024 Assessment Report

Grade Distribution in Career Technical Education (CTE) by Program

Count and percent of semester grades earned at each school. Only courses that assign letter grades have been included in the chart.

Program	School	A-C Grades	A-C Percent	D-F Grades	D-F Percent
504	AHS	47	97.9%	1	2.1%
	CHS	76	100.0%		0.0%
	LLHS	80	98.8%	1	1.2%
	MHS	38	100.0%		0.0%
Special Education	ACIS	14	87.5%	2	12.5%
	AHS	42	76.4%	13	23.6%
	CHS	65	98.5%	1	1.5%
	LLHS	93	94.9%	5	5.1%
	MHS	32	100.0%		0.0%
English Learner	AHS	3	50.0%	3	50.0%
	LLHS	49	100.0%		0.0%
	MHS	2	100.0%		0.0%
Reclassified English Learner	ACIS		0.0%	1	100.0%
	AHS	15	78.9%	4	21.1%
	CHS	24	100.0%		0.0%
	LLHS	113	99.1%	1	0.9%
	MHS	22	100.0%		0.0%
Low Socioeconomic Status	AHS	2	100.0%		0.0%
	LLHS	16	94.1%	1	5.9%
	MHS	2	100.0%		0.0%

2024 Assessment Report

Grade Distribution in World Language by Program

Count and percent of semester grades earned at each school. Only courses that assign letter grades have been included in the chart.

Program	School	A-C Grades	A-C Percent	D-F Grades	D-F Percent
504	ACIS	10	100.0%		0.0%
	AHS	123	93.2%	9	6.8%
	CHS	186	95.4%	9	4.6%
	LLHS	157	86.7%	24	13.3%
	MHS	186	100.0%		0.0%
Special Education	ACIS	21	95.5%	1	4.5%
	AHS	56	80.0%	14	20.0%
	CHS	76	96.2%	3	3.8%
	LLHS	90	89.1%	11	10.9%
	MHS	90	92.8%	7	7.2%
English Learner	AHS	12	85.7%	2	14.3%
	CHS	10	100.0%		0.0%
	LLHS	45	83.3%	9	16.7%
	MHS	3	100.0%		0.0%
Reclassified English Learner	ACIS	2	100.0%		0.0%
	AHS	117	100.0%		0.0%
	CHS	106	96.4%	4	3.6%
	LLHS	300	96.5%	11	3.5%
	MHS	79	100.0%		0.0%
Low Socioeconomic Status	AHS	8	100.0%		0.0%
	CHS	7	100.0%		0.0%
	LLHS	15	88.2%	2	11.8%
	MHS	2	100.0%		0.0%



2024 Assessment Report

Advanced Placement Examinations

Advanced Placement Exams Multi-Year Trends

Percent of Students Taking AP Exams

The percent of students taking AP exams is based on the unduplicated number of students in grades 10 through 12 taking one or more AP exams. The years listed in the chart below refer to the year in which the AP exam was taken.

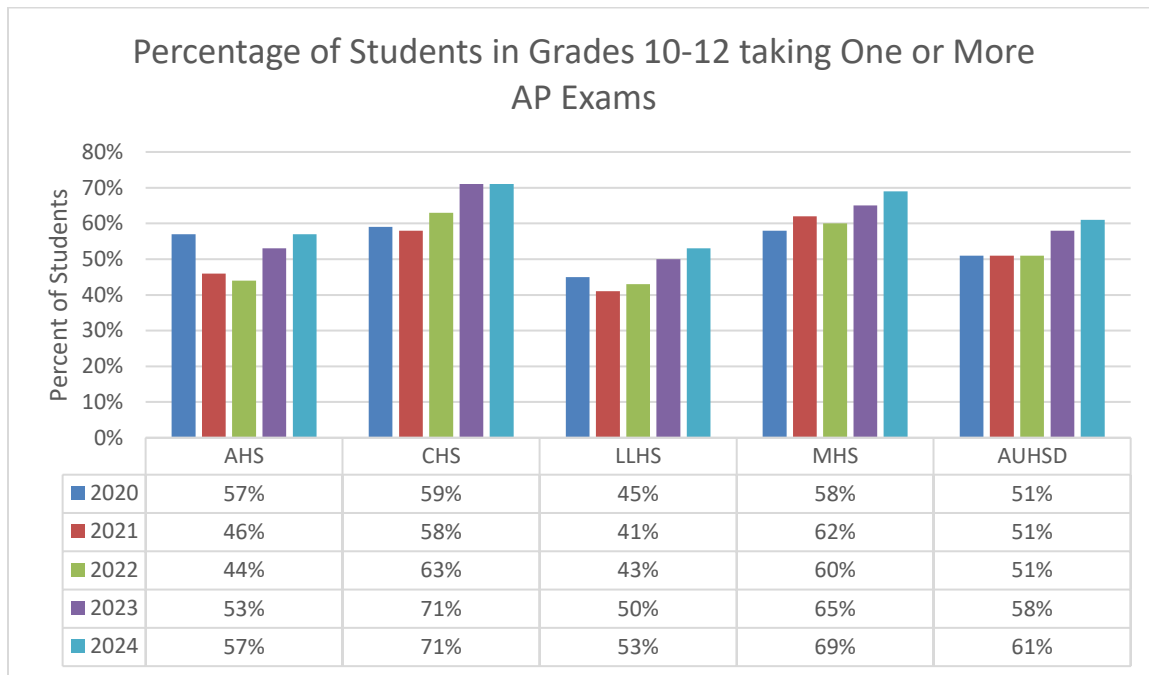


Table 1: Total Number of Students Taking Exams

	2015	2016	2017	2018	2019	2020	2021	2022	2023	2024
Acalanes	434	467	472	473	450	464	441	423	497	520
Campolindo	437	519	569	574	628	621	600	655	693	721
Las Lomas	444	489	462	478	504	546	495	509	590	635
Miramonte	405	469	534	590	546	543	547	547	578	628
ACIS								5	2	1
AUHSD	1720	1944	2038	2114	2127	2177	2083	2148	2360	2505

Table 2: Total Number of Exams Taken

	2015	2016	2017	2018	2019	2020	2021	2022	2023	2024
Acalanes	758	854	837	873	786	921	859	923	1065	1156
Campolindo	852	1025	1161	1152	1205	1185	1261	1457	1467	1657
Las Lomas	777	878	860	845	932	1100	1036	1082	1186	1368
Miramonte	842	955	1176	1266	1155	1254	1228	1277	1348	1563
ACIS								17	2	5
AUHSD	3229	3712	4026	4135	4078	4460	4384	4764	5068	5744

Table 3: Percentage of Scores of Three or Higher

	2015	2016	2017	2018	2019	2020	2021	2022	2023	2024
Acalanes	88%	89%	89%	88%	89%	86%	82%	86%	88%	88%
Campolindo	89%	90%	91%	92%	91%	89%	84%	91%	89%	91%
Las Lomas	87%	85%	84%	86%	89%	83%	77%	81%	81%	87%
Miramonte	95%	94%	89%	92%	92%	91%	82%	90%	89%	93%
ACIS								80%	100%	80%
AUHSD	90%	90%	89%	88%	90%	84%	78%	87%	87%	90%

Advanced Placement Exams Multi Year Participation Trend by Race/Ethnicity**Table 4: Multi-Year Participation and Achievement Data by Race/Ethnicity**

2024	Total AP Students	% of Total Enrollment	Total Exams	Avg Exams Per Student	Mean Score
American Indian or Alaska Native	4	57%	12	3.0	3.68
Asian	470	58%	1306	2.8	4.03
Black or African American	21	24%	38	1.8	3.56
Filipino	39	40%	81	2.1	3.77
Hispanic or Latino	214	35%	475	2.2	3.65
Hawaiian or Pacific Islander	2	22%	5	2.5	3.50
White	1502	47%	3311	2.2	3.73
Two or More Races	229	46%	486	2.1	3.94
Race Intentionally Left Blank	16	33%	37	2.3	4.24

2023	Total AP Students	% of Total Enrollment	Total Exams	Avg Exams Per Student	Mean Score
American Indian or Alaska Native	5	63%	11	2.2	4.40
Asian	468	58%	1216	2.6	3.89
Black or African American	28	35%	34	1.2	3.49
Filipino	34	40%	46	1.4	3.01
Hispanic or Latino	229	38%	376	1.6	3.64
Hawaiian or Pacific Islander	3	38%	5	1.7	3.63
White	1691	52%	3129	1.9	3.59
Two or More Races	224	49%	474	2.1	3.75
Race Intentionally Left Blank	31	46%	42	1.4	3.84

2022	Total AP Students	% of Total Enrollment	Total Exams	Avg Exams Per Student	Mean Score
American Indian or Alaska Native	2	25%	0	0	0
Asian	457	56%	1172	2.6	3.90
Black or African American	21	28%	31	1.5	3.39
Hispanic or Latino	223	36%	380	1.7	3.73
Hawaiian or Pacific Islander	2	17%	2	1.0	4.00
White	1550	44%	2776	1.8	3.77
Two or more races	184	42%	338	1.8	3.96
Race intentionally left blank	15	45%	61	4.1	3.80

Acalanes Union High School District

2024 Assessment Report

2021	Total AP Students	% of Total Enrollment	Total Exams	Avg Exams Per Student	Mean Score
American Indian or Alaska Native	4	36%	11	2.8	3.00
Asian	377	42%	913	2.4	3.57
Black or African American	19	21%	32	1.7	2.91
Hispanic or Latino	215	38%	426	2.0	3.36
Hawaiian or Pacific Islander	4	67%	9	2.3	3.00
White	1202	34%	2392	2.0	3.46
Two or more races, non-Hispanic	218	63%	483	2.2	3.62
Race intentionally left blank	47	61%	121	2.6	3.94

2020	Total AP Students	% of Total Enrollment	Total Exams	Avg Exams Per Student	Mean Score
American Indian or Alaska Native	2	33%	2	1.0	3.00
Asian	360	40%	842	2.3	3.84
Black or African American	13	14%	27	2.1	3.22
Hispanic or Latino	233	40%	448	1.9	3.62
Hawaiian or Pacific Islander	4	36%	7	1.8	3.71
White	1268	35%	2519	2.0	3.66
Two or more races, non-Hispanic	236	62%	494	2.1	3.65
Race intentionally left blank	61	79%	126	2.1	3.95

Acalanes Union High School District

2024 Assessment Report

Advanced Placement Exam Results – 2024 2D Art and Design

2024 Score	5	4	3	2	1	School Total
AHS	1	5	8	-	-	14
CHS	2	10	6	2	-	20
LLHS	-	-	-	-	-	-
MHS	2	5	7	-	-	14
Score Total	5	20	21	2	-	48
% of Tests	10%	42%	44%	4%	0%	100%

2023 Score	5	4	3	2	1	School Total
AHS	-	1	-	-	-	1
CHS	3	16	10	-	-	29
LLHS	-	-	1	-	-	1
MHS	2	3	3	1	-	9
Score Total	5	20	14	1	-	40
% of Tests	13%	50%	35%	2%	0%	100%

2022 Score	5	4	3	2	1	School Total
AHS	1	5	2	-	-	8
CHS	3	15	5	1	-	24
LLHS	-	-	-	-	-	-
MHS	-	-	4	-	-	4
Score Total	4	20	11	1	-	36
% of Tests	11%	56%	31%	3%	0%	100%

2021 Score	5	4	3	2	1	School Total
AHS	1	2	-	-	-	3
CHS	1	10	5	-	-	16
LLHS	1	2	2	1	-	6
MHS	2	1	-	-	-	3
Score Total	5	15	7	1	-	28
% of Tests	18%	54%	25%	4%	0%	100%

2020 Score	5	4	3	2	1	School Total
AHS	2	1	1	-	-	4
CHS	1	2	7	-	-	10
LLHS	-	-	-	-	-	-
MHS	-	-	-	-	-	-
Score Total	3	3	8	-	-	14
% of Tests	21%	21%	57%	0%	0%	100%

Acalanes Union High School District

2024 Assessment Report

Advanced Placement Exam Results – 2024 Art History

2024 Score	5	4	3	2	1	School Total
AHS	-	1	-	-	-	1
CHS	11	16	24	9	2	62
LLHS	-	-	-	-	-	-
MHS	-	-	-	-	-	-
Score Total	11	16	24	9	2	62*
% of Tests	18%	26%	39%	15%	3%	100%

2023 Score	5	4	3	2	1	School Total
AHS	-	-	-	-	-	-
CHS	17	18	26	5	1	67
LLHS	-	-	-	-	-	-
MHS	-	-	-	-	-	-
Score Total	17	18	26	5	1	67
% of Tests	25%	27%	39%	7.5%	1.5%	100%

2022 Score	5	4	3	2	1	School Total
AHS	-	-	-	-	-	-
CHS	18	11	9	6	2	46
LLHS	-	-	-	-	-	-
MHS	-	-	-	-	-	-
Score Total	18	11	9	6	2	46
% of Tests	39%	24%	20%	13%	4%	100%

2021 Score	5	4	3	2	1	School Total
AHS	-	-	-	-	-	-
CHS	9	6	7	7	0	29
LLHS	-	-	-	-	-	-
MHS	1	-	-	-	-	1
Score Total	10	6	7	7	-	30
% of Tests	33%	20%	23%	23%	0%	100%

2020 Score	5	4	3	2	1	School Total
AHS	-	-	-	-	-	-
CHS	14	20	11	11	2	58
LLHS	-	-	-	-	-	-
MHS	-	-	-	-	-	-
Score Total	14	20	11	11	2	58
% of Tests	24%	34%	19%	19%	3%	100%

Acalanes Union High School District

2024 Assessment Report

Advanced Placement Exam Results – 2024 Biology

2024 Score	5	4	3	2	1	School Total
AHS	11	8	6	1	-	26
CHS	33	24	10	3	1	71
LLHS	13	24	10	5	1	53
MHS	20	11	3	2	1	37
Score Total	77	67	29	11	1	187
% of Tests	41%	36%	16%	6%	2%	100%

2024 Score	5	4	3	2	1	School Total
ACIS	1	-	-	-	-	1
AHS	9	8	8	-	-	25
CHS	17	30	20	7	-	74
LLHS	9	14	8	3	1	35
MHS	18	23	8	2	-	51
Score Total	54	75	44	12	1	186
% of Tests						

2022 Score	5	4	3	2	1	School Total
AHS	3	3	6	2	-	14
CHS	27	25	13	2	1	68
LLHS	5	19	14	6	-	44
MHS	23	17	4	1	-	45
Score Total	58	64	37	11	1	171
% of Tests						

2021 Score	5	4	3	2	1	School Total
AHS	8	13	16	4	-	41
CHS	12	22	20	5	1	60
LLHS	2	8	19	5	1	35
MHS	11	20	13	2	-	46
Score Total	33	63	68	16	2	182
% of Tests						

2020 Score	5	4	3	2	1	School Total
AHS	3	9	8	1	-	21
CHS	11	19	15	7	-	52
LLHS	8	16	12	5	-	41
MHS	15	15	16	-	-	46
Score Total	37	59	51	13	-	160

Acalanes Union High School District

2024 Assessment Report

Advanced Placement Exam Results – 2024 Calculus AB

2024 Score	5	4	3	2	1	School Total
AHS	59	26	4	2	-	91
CHS	75	46	10	8	1	140
LLHS	48	30	9	3	2	92
MHS	67	47	6	9	-	129
Score Total	249	149	29	22	3	452
% of Tests	55%	33%	6%	5%	1%	100%

2023 Score	5	4	3	2	1	School Total
ACIS	1	-	1	-	-	2
AHS	42	13	10	4	-	69
CHS	63	26	26	5	2	122
LLHS	46	23	20	9	-	98
MHS	53	29	15	7	2	106
Score Total	205	91	72	25	4	397
% of Tests	52%	23%	18%	6%	1%	100%

2022 Score	5	4	3	2	1	School Total
ACIS	1	-	2	-	-	3
AHS	45	26	3	3	-	77
CHS	46	19	13	12	2	92
LLHS	25	19	18	16	7	85
MHS	51	28	16	4	5	104
Score Total	168	92	52	35	14	361

% of Tests

2021 Score	5	4	3	2	1	School Total
AHS	24	14	16	13	2	69
CHS	56	23	20	12	3	114
LLHS	22	14	19	21	5	81
MHS	22	14	27	18	1	82
Score Total	124	65	82	64	11	346

% of Tests

2020 Score	5	4	3	2	1	School Total
AHS	31	23	18	13	4	89
CHS	62	27	13	5	-	107
LLHS	23	27	18	9	7	84
MHS	45	29	14	6	1	95
Score Total	161	106	63	33	12	375

Acalanes Union High School District

2024 Assessment Report

Advanced Placement Exam Results – 2024 Calculus BC

2024 Score	5	4	3	2	1	School Total
AHS	31	8	-	-	-	39
CHS	47	11	4	2	-	64
LLHS	30	14	8	4	3	58
MHS	58	4	2	-	-	64
Score Total	166	37	14	6	2	225
% of Tests	74%	16%	6%	3%	1%	100%

2023 Score	5	4	3	2	1	School Total
AHS	26	10	8	-	1	45
CHS	35	3	5	2	-	45
LLHS	23	12	8	4	-	47
MHS	56	3	1	-	-	60
Score Total	140	28	22	6	1	197
% of Tests	71%	14%	11%	3%	1%	100%

2022 Score	5	4	3	2	1	School Total
AHS	21	9	2	1	-	33
CHS	46	4	4	1	-	55
LLHS	21	13	3	1	-	38
MHS	35	4	1	1	-	41
Score Total	123	30	10	4	-	167
% of Tests	74%	18%	6%	2%	0%	100%

2021 Score	5	4	3	2	1	School Total
AHS	16	6	6	8	1	37
CHS	34	8	4	1	-	47
LLHS	27	13	9	6	-	55
MHS	40	7	2	-	-	49
Score Total	117	34	21	15	1	188
% of Tests	62%	18%	11%	8%	1%	100%

2020 Score	5	4	3	2	1	School Total
AHS	23	5	6	1	-	35
CHS	25	6	4	-	-	35
LLHS	28	12	2	3	-	45
MHS	40	3	2	-	-	45
Score Total	116	26	14	4	-	160
% of Tests	73%	16%	9%	3%	0%	100%

Acalanes Union High School District

2024 Assessment Report

Advanced Placement Exam Results – 2024 Chemistry

2024 Score	5	4	3	2	1	School Total
AHS	3	8	5	1	-	17
CHS	23	20	8	4	-	55
LLHS	6	12	19	7	-	44
MHS	9	15	20	2	-	46
Score Total	41	55	52	14	-	162
% of Tests	25%	34%	32%	9%	0%	100%

2023 Score	5	4	3	2	1	School Total
AHS	5	5	4	-	-	14
CHS	14	15	4	-	-	33
LLHS	3	5	7	3	-	18
MHS	7	12	11	3	-	33
Score Total	29	37	26	6	-	98
% of Tests	30%	38%	26%	6%	0%	100%

2022 Score	5	4	3	2	1	School Total
AHS	-	8	3	3	1	15
CHS	8	5	8	3	1	25
LLHS	4	1	8	1	1	21
MHS	1	3	10	5	-	19
Score Total	13	17	29	18	3	80
% of Tests	16%	21%	36%	23%	4%	100%

2021 Score	5	4	3	2	1	School Total
AHS	-	-	-	-	-	-
CHS	7	5	4	1	2	19
LLHS	2	4	6	8	11	31
MHS	3	7	8	2	1	21
Score Total	12	16	18	11	14	71
% of Tests	17%	23%	25%	15%	20%	100%

2020 Score	5	4	3	2	1	School Total
AHS	2	9	6	5	1	23
CHS	12	9	4	1	-	26
LLHS	1	11	16	10	6	44
MHS	2	5	12	5	2	26
Score Total	17	34	38	21	9	119
% of Tests	14%	29%	32%	18%	8%	100%

Acalanes Union High School District

2024 Assessment Report

Advanced Placement Exam Results – 2024 Chinese Language and Culture

2024 Score	5	4	3	2	1	School Total
AHS	3	4	3	2	3	15
CHS	9	2	4	-	-	15
LLHS	2	-	2	2	-	6
MHS	7	7	3	-	-	17
Score Total	21	13	12	4	3	53
% of Tests	40%	25%	23%	8%	6%	100%

2023 Score	5	4	3	2	1	School Total
AHS	7	4	5	3	1	20
CHS	4	4	1	1	1	11
LLHS	2	1	2	2	3	10
MHS	9	1	6	1	-	17
Score Total	22	10	14	7	5	58
% of Tests	38%	17%	24%	12%	9%	100%

2022 Score	5	4	3	2	1	School Total
AHS	3	1	1	3	-	8
CHS	4	1	3	-	1	9
LLHS	-	2	3	-	-	5
MHS	3	1	4	-	-	8
Score Total	10	5	11	3	1	30
% of Tests	33%	17%	37%	10%	3%	100%

2021 Score	5	4	3	2	1	School Total
AHS	1	1	0	3	4	9
CHS	6	1	1	-	-	8
LLHS	2	-	1	-	-	3
MHS	7	3	3	-	3	16
Score Total	16	5	5	3	7	36
% of Tests	44%	14%	14%	8%	19%	100%

2020 Score	5	4	3	2	1	School Total
AHS	3	1	-	4	5	13
CHS	1	1	2	-	1	5
LLHS	1	-	1	-	-	2
MHS	4	2	3	-	-	9
Score Total	9	4	6	4	6	29
% of Tests	31%	14%	21%	14%	21%	100%

Acalanes Union High School District

2024 Assessment Report

Advanced Placement Exam Results – 2024 Comparative Government and Politics

2024 Score	5	4	3	2	1	School Total
AHS	9	19	12	-	-	40
CHS	48	54	22	3	-	127
LLHS	-	-	-	-	-	-
MHS	15	15	6	-	-	36
Score Total	72	88	40	3	-	203
% of Tests	35%	43%	20%	1%	0%	100%

2023 Score	5	4	3	2	1	School Total
AHS	36	23	10	2	-	71
CHS	45	24	18	3	1	91
LLHS	-	-	-	-	-	-
MHS	5	5	8	1	-	19
Score Total	86	52	36	6	1	181
% of Tests	47%	29%	20%	3%	1%	100%

2022 Score	5	4	3	2	1	School Total
AHS	19	21	5	1	-	46
CHS	26	31	19	2	-	78
LLHS	1	-	-	-	-	1
MHS	11	17	6	4	4	42
Score Total	57	69	30	7	4	167
% of Tests	34%	41%	18%	4%	2%	100%

2021 Score	5	4	3	2	1	School Total
AHS	20	24	20	6	-	70
CHS	22	21	14	2	-	59
LLHS	1	1	-	-	-	2
MHS	10	10	9	1	1	31
Score Total	53	56	43	9	1	162
% of Tests	33%	35%	27%	6%	1%	100%

2020 Score	5	4	3	2	1	School Total
AHS	49	19	12	7	-	87
CHS	23	21	11	8	7	70
LLHS	-	-	-	-	-	-
MHS	12	19	6	3	2	42
Score Total	84	59	29	18	9	199
% of Tests	42%	30%	15%	9%	5%	100%

Acalanes Union High School District

2024 Assessment Report

Advanced Placement Exam Results – 2024 Computer Science A

2024 Score	5	4	3	2	1	School Total
AHS	8	14	6	5	7	40
CHS	27	17	11	1	-	56
LLHS	12	4	6	-	-	22
MHS	13	4	7	2	1	27
Score Total	60	39	30	8	8	145
% of Tests	41%	27%	21%	6%	6%	100%

2023 Score	5	4	3	2	1	School Total
AHS	7	9	8	6	4	34
CHS	16	10	2	1	-	29
LLHS	12	7	2	3	-	24
MHS	24	8	5	-	2	39
Score Total	59	34	17	10	6	126
% of Tests	47%	27%	13%	8%	5%	100%

2022 Score	5	4	3	2	1	School Total
AHS	11	13	13	6	1	44
CHS	18	14	4	3	2	41
LLHS	9	8	4	2	2	25
MHS	18	8	2	-	4	32
Score Total	56	43	23	11	9	142
% of Tests	39%	30%	16%	8%	6%	100%

2021 Score	5	4	3	2	1	School Total
AHS	5	7	5	5	3	25
CHS	20	11	8	4	1	44
LLHS	3	7	2	3	5	20
MHS	15	6	11	3	1	36
Score Total	43	31	26	15	10	125
% of Tests	34%	25%	21%	12%	8%	100%

2020 Score	5	4	3	2	1	School Total
AHS	10	9	7	3	2	31
CHS	21	11	11	2	1	46
LLHS	10	9	14	3	3	39
MHS	18	8	9	6	2	43
Score Total	59	37	41	14	8	159
% of Tests	37%	23%	26%	9%	5%	100%

Acalanes Union High School District

2024 Assessment Report

Advanced Placement Exam Results – 2024 Computer Science Principles

2024 Score	5	4	3	2	1	School Total
AHS	40	48	56	16	2	162
CHS	29	29	26	1	-	85
LLHS	10	17	18	5	-	50
MHS	42	37	41	13	1	134
Score Total	121	131	141	35	3	431
% of Tests	28%	30%	33%	8%	1%	100%

2023 Score	5	4	3	2	1	School Total
AHS	30	51	41	16	1	139
CHS	24	21	15	1	-	61
LLHS	2	10	5	3	-	20
MHS	29	29	35	12	4	109
Score Total	85	111	96	32	5	329
% of Tests	26%	34%	29%	10%	1%	100%

2022 Score	5	4	3	2	1	School Total
AHS	16	33	25	3	-	77
CHS	11	19	11	1	-	42
LLHS	3	4	4	1	-	12
MHS	15	34	34	10	1	94
Score Total	45	90	74	12	1	184
% of Tests	20%	40%	33%	7%	0%	100%

2021 Score	5	4	3	2	1	School Total
AHS	27	27	16	4	-	74
CHS	18	16	16	3	3	56
LLHS	-	-	-	-	-	-
MHS	22	23	32	8	3	88
Score Total	67	66	64	15	6	218
% of Tests	31%	30%	29%	7%	3%	100%

2020 Score	5	4	3	2	1	School Total
AHS	23	45	29	6	-	103
CHS	6	23	28	2	-	59
LLHS	-	-	-	-	-	-
MHS	14	49	28	8	5	104
Score Total	43	117	85	16	5	266
% of Tests	16%	44%	32%	6%	2%	100%

Acalanes Union High School District

2024 Assessment Report

Advanced Placement Exam Results – 2024 Drawing

2024 Score	5	4	3	2	1	School Total
AHS	-	-	-	-	-	-
CHS	-	-	-	-	-	-
LLHS	-	8	11	2	-	21
MHS	-	-	-	-	-	-
Score Total	-	8	11	2	-	21
% of Tests	0%	38%	52%	10%	0%	100%

2023 Score	5	4	3	2	1	School Total
AHS	-	-	-	-	-	-
CHS	1	-	-	-	-	1
LLHS	2	9	7	2	-	20
MHS	-	-	-	-	-	-
Score Total	3	9	7	2	-	21
% of Tests	14%	43%	33%	10%	0%	100%

2022 Score	5	4	3	2	1	School Total
AHS	-	-	-	-	-	-
CHS	-	-	-	-	-	-
LLHS	3	4	5	2	-	14
MHS	-	-	-	-	-	-
Score Total	3	4	5	2	-	14
% of Tests	21%	29%	36%	14%	0%	100%

2021 Score	5	4	3	2	1	School Total
AHS	-	-	-	-	-	-
CHS	-	-	-	-	-	-
LLHS	1	11	5	-	-	17
MHS	-	-	1	-	-	1
Score Total	1	11	6	-	-	18
% of Tests	6%	61%	33%	0%	0%	100%

2020 Score	5	4	3	2	1	School Total
AHS	-	-	-	-	-	-
CHS	-	-	-	-	-	-
LLHS	-	3	8	-	-	11
MHS	2	3	2	-	-	7
Score Total	2	6	10	-	-	18
% of Tests	11%	33%	56%	0%	0%	100%

Acalanes Union High School District

2024 Assessment Report

Advanced Placement Exam Results – 2024 English Language and Composition

2024 Score	5	4	3	2	1	School Total
AHS	27	33	35	12	1	108
CHS	42	79	57	25	2	205
LLHS	54	58	46	25	2	185
MHS	42	34	22	5	1	104
Score Total	165	204	160	67	6	602
% of Tests	27%	34%	27%	11%	1%	100%

2023 Score	5	4	3	2	1	School Total
AHS	17	19	11	7	2	56
CHS	44	68	38	18	1	169
LLHS	34	56	47	35	1	173
MHS	20	38	11	3	-	72
Score Total	115	181	107	63	4	470
% of Tests	24%	39%	23%	13%	1%	100%

2022 Score

ACIS	1	-	-	-	1	2
AHS	23	26	21	7	1	78
CHS	29	25	15	7	-	76
LLHS	20	41	29	21	5	116
MHS	24	18	10	6	-	58
Score Total	97	110	75	41	7	330
% of Tests	29%	33%	23%	12%	2%	100%

2021 Score	5	4	3	2	1	School Total
AHS	8	16	5	6	-	35
CHS	31	47	23	5	1	107
LLHS	17	25	40	21	-	103
MHS	21	14	7	2	-	44
Score Total	77	102	75	34	1	289
% of Tests	27%	35%	26%	12%	0%	100%

2020 Score	5	4	3	2	1	School Total
AHS	-	1	-	-	-	1
CHS	-	-	-	1	-	1
LLHS	18	16	29	12	3	78
MHS	1	4	1	1	-	7
Score Total	19	21	30	14	3	87
% of Tests	22%	24%	34%	16%	3%	100%

Acalanes Union High School District

2024 Assessment Report

Advanced Placement Exam Results – 2024 English Literature and Composition

2024 Score	5	4	3	2	1	School Total
AHS	15	35	35	6	-	91
CHS	38	30	8	-	-	76
LLHS	24	19	7	-	-	50
MHS	23	18	3	1	-	45
Score Total	100	102	53	7	-	262
% of Tests	38%	39%	20%	3%	0%	100%

2023 Score	5	4	3	2	1	School Total
AHS	34	32	25	2	-	93
CHS	35	11	4	-	-	50
LLHS	20	10	4	1	-	35
MHS	21	10	4	-	1	36
Score Total	110	63	37	3	1	214
% of Tests	52%	30%	17%	1%	0%	100%

2022 Score

ACIS	1	2	-	-	-	2
AHS	22	20	7	-	-	49
CHS	40	11	1	1	1	53
LLHS	23	14	9	-	-	46
MHS	23	18	7	1	-	49
Score Total	109	64	24	1	1	199
% of Tests	55%	32%	12%	1%	1%	100%

2021 Score	5	4	3	2	1	School Total
AHS	4	14	25	21	2	66
CHS	11	12	12	8	2	45
LLHS	6	12	17	7	3	45
MHS	4	11	19	6	-	40
Score Total	25	49	73	42	7	196
% of Tests	13%	25%	37%	21%	4%	100%

2020 Score	5	4	3	2	1	School Total
AHS	22	20	34	12	-	88
CHS	15	15	6	3	-	39
LLHS	11	11	10	1	-	33
MHS	12	12	18	5	-	47
Score Total	60	58	68	21	-	207
% of Tests	29%	28%	33%	10%	0%	100%

Acalanes Union High School District

2024 Assessment Report

Advanced Placement Exam Results – 2024 Environmental Science

2024 Score	5	4	3	2	1	School Total
ACIS	1	-	-	1	-	2
AHS	15	59	28	31	10	143
CHS	21	41	24	20	1	107
LLHS	11	30	23	26	13	103
MHS	30	93	26	25	3	177
Score Total	77	223	101	103	27	531
% of Tests	15%	42%	19%	19%	5%	100%

2023 Score	5	4	3	2	1	School Total
ACIS	-	-	-	1	-	1
AHS	7	50	21	30	5	113
CHS	15	73	27	29	4	148
LLHS	5	21	13	28	11	78
MHS	23	38	13	13	1	88
Score Total	50	182	74	101	21	428
% of Tests	12%	42%	17%	24%	5%	100%

2022 Score	5	4	3	2	1	School Total
ACIS	-	1	-	-	-	1
AHS	8	34	28	35	18	123
CHS	19	57	32	27	4	139
LLHS	2	10	11	21	8	52
MHS	32	58	30	17	3	140
Score Total	61	160	101	100	33	455
% of Tests	13%	35%	22%	22%	7%	100%

2021 Score	5	4	3	2	1	School Total
AHS	4	26	21	22	8	81
CHS	23	39	13	15	4	94
LLHS	6	12	10	31	11	70
MHS	19	40	16	23	9	107
Score Total	52	117	60	91	32	352
% of Tests	15%	33%	17%	26%	9%	100%

Acalanes Union High School District

2024 Assessment Report

2020 Score	5	4	3	2	1	School Total
AHS	1	-	-	3	-	4
CHS	10	36	19	22	14	101
LLHS	24	39	9	17	4	93
MHS	11	35	12	22	9	89
Score Total	6	28	8	9	2	53
% of Tests	11%	53%	15%	17%	4%	100%

Acalanes Union High School District

2024 Assessment Report

Advanced Placement Exam Results – 2024 European History

2024 Score	5	4	3	2	1	School Total
AHS	28	22	8	-	-	58
CHS	38	69	29	4	-	140
LLHS	9	25	10	4	-	48
MHS	35	41	11	2	-	89
Score Total	110	156	58	10	-	334
% of Tests	33%	47%	17%	3%	0%	100%

2023 Score	5	4	3	2	1	School Total
AHS	14	37	30	18	2	101
CHS	29	53	39	11	2	134
LLHS	12	14	13	3	-	42
MHS	28	30	21	9	-	88
Score Total	83	134	103	41	4	365
% of Tests	23%	37%	28%	11%	1%	100%

2022 Score	5	4	3	2	1	School Total
AHS	12	22	11	9	2	56
CHS	34	44	38	22	-	138
LLHS	1	14	13	6	1	35
MHS	23	27	22	6	-	78
Score Total	70	107	84	43	3	307
% of Tests	23%	35%	27%	14%	1%	100%

2021 Score	5	4	3	2	1	School Total
AHS	20	39	22	13	1	95
CHS	10	31	30	33	3	107
LLHS	8	13	9	18	1	49
MHS	27	19	21	15	1	83
Score Total	65	102	82	79	6	334
% of Tests	19%	31%	25%	24%	2%	100%

2020 Score	5	4	3	2	1	School Total
AHS	27	18	23	12	1	81
CHS	23	42	31	18	1	115
LLHS	6	3	7	7	1	24
MHS	41	23	10	7	-	81
Score Total	97	86	71	44	3	301
% of Tests	32%	29%	24%	15%	1%	100%

Acalanes Union High School District

2024 Assessment Report

Advanced Placement Exam Results – 2024 French Language and Culture

2024 Score	5	4	3	2	1	School Total
AHS	-	-	2	2	1	5
CHS	-	2	2	-	-	4
LLHS	2	-	1	1	-	4
MHS	1	2	2	1	-	6
Score Total	3	4	7	4	1	19
% of Tests	16%	21%	37%	21%	5%	100%

2023 Score	5	4	3	2	1	School Total
AHS	1	-	3	-	1	5
CHS	2	2	3	1	-	8
LLHS	-	-	1	-	-	1
MHS	1	2	9	2	-	14
Score Total	4	4	16	3	1	28
% of Tests	14%	14%	57%	11%	4%	100%

2022 Score	5	4	3	2	1	School Total
AHS	-	4	-	1	-	5
CHS	-	5	7	1	-	13
LLHS	4	4	2	-	-	10
MHS	3	5	3	-	-	11
Score Total	7	18	12	2	-	39
% of Tests	18%	46%	31%	5%	0%	100%

2021 Score	5	4	3	2	1	School Total
AHS	1	1	-	1	-	3
CHS	6	4	8	6	-	24
LLHS	1	3	-	-	-	4
MHS	3	3	2	-	-	8
Score Total	11	11	10	7	-	39
% of Tests	28%	28%	26%	18%	0%	100%

2020 Score	5	4	3	2	1	School Total
AHS	4	-	-	-	-	4
CHS	4	9	9	3	-	25
LLHS	3	4	1	1	-	9
MHS	3	7	1	1	-	12
Score Total	14	20	11	5	-	50
% of Tests	28%	40%	22%	10%	0%	100%

Acalanes Union High School District

2024 Assessment Report

Advanced Placement Exam Results – 2024 German Language and Culture

2024 Score	5	4	3	2	1	School Total
AHS	-	-	-	-	-	-
CHS	5	6	2	-	1	14
LLHS	-	-	-	-	-	-
MHS	-	1	-	-	-	1
Score Total	5	7	2	-	1	15
% of Tests	33%	47%	13%	0%	7%	100%

2023 Score	5	4	3	2	1	School Total
AHS	-	-	-	-	-	-
CHS	2	6	2	2	-	12
LLHS	1	-	-	-	-	1
MHS	-	-	-	-	-	-
Score Total	3	6	2	2	-	13
% of Tests	23%	46%	15%	15%	0%	100%

2022 Score	5	4	3	2	1	School Total
AHS	1	-	-	-	-	1
CHS	5	3	7	-	-	15
LLHS	1	-	-	-	-	1
MHS	-	-	-	-	-	-
Score Total	7	3	7	-	-	17
% of Tests	41%	18%	41%	0%	0%	100%

2021 Score	5	4	3	2	1	School Total
AHS	-	-	-	1	-	1
CHS	-	8	3	2	-	13
LLHS	-	1	-	-	-	1
MHS	1	-	-	-	-	1
Score Total	1	9	3	3	-	16
% of Tests	6%	56%	19%	19%	0%	100%

2020 Score	5	4	3	2	1	School Total
AHS	1	-	-	-	-	1
CHS	3	5	5	1	-	14
LLHS	1	-	1	-	-	2
MHS	-	-	-	-	-	-
Score Total	5	5	6	1	-	17
% of Tests	29%	29%	35%	6%	0%	100%

Acalanes Union High School District

2024 Assessment Report

Advanced Placement Exam Results – 2024 Human Geography

2024 Score	5	4	3	2	1	School Total
AHS	-	-	1	-	-	1
CHS	-	1	-	-	-	1
LLHS	48	37	15	6	1	107
MHS	-	-	-	-	-	
Score Total	48	38	16	6	1	109
% of Tests	44%	35%	15%	6%	1%	100%

2023 Score	5	4	3	2	1	School Total
AHS	1	-	-	-	-	1
CHS	-	-	-	-	-	-
LLHS	57	30	18	5	4	114
MHS	-	-	-	-	-	
Score Total	58	30	18	5	4	115
% of Tests	50%	26%	16%	4%	4%	100%

2022 Score	5	4	3	2	1	School Total
AHS	-	-	1	-	-	1
CHS	-	1	-	-	-	1
LLHS	44	16	18	1	4	83
MHS	-	-	-	-	-	-
Score Total	44	17	19	1	4	85
% of Tests	52%	20%	22%	1%	5%	100%

2021 Score	5	4	3	2	1	School Total
AHS	-	1	-	-	-	1
CHS	1	-	-	-	-	1
LLHS	23	23	12	5	6	69
MHS	1	-	-	-	-	1
Score Total	25	24	12	5	6	72
% of Tests	35%	33%	17%	7%	8%	100%

2020 Score	5	4	3	2	1	School Total
AHS	-	-	-	-	-	-
CHS	-	1	-	-	-	1
LLHS	34	46	24	7	11	122
MHS	-	-	-	1	-	1
Score Total	34	47	24	8	11	124
% of Tests	27%	38%	19%	6%	9%	100%

Acalanes Union High School District

2024 Assessment Report

Advanced Placement Exam Results – 2024 Japanese Language and Culture

2024 Score	5	4	3	2	1	School Total
AHS	-	-	1	-	-	1
CHS	-	-	-	-	-	-
LLHS	1	2	1	-	-	4
MHS	1	-	1	-	-	2
Score Total	2	2	3	-	-	7
% of Tests	29%	29%	43%	0%	0%	100%

2023 Score	5	4	3	2	1	School Total
AHS	2	1	-	-	-	3
CHS	1	-	-	-	1	2
LLHS	3	-	1	1	-	5
MHS	-	-	-	1	-	1
Score Total	6	1	1	2	1	11
% of Tests	55%	9%	9%	18%	9%	100%

2022 Score	5	4	3	2	1	School Total
AHS	1	-	-	-	-	1
CHS	1	-	-	-	-	1
LLHS	1	-	-	-	-	1
MHS	-	-	-	1	-	1
Score Total	3	-	-	1	-	4
% of Tests	75%	0%	0%	25%	0%	100%

2021 Score	5	4	3	2	1	School Total
AHS	-	-	-	-	1	1
CHS	-	-	-	-	-	-
LLHS	-	-	-	-	-	-
MHS	-	-	-	-	-	-
Score Total	-	-	-	-	1	1
% of Tests	0%	0%	0%	0%	100%	100%

2020 Score	5	4	3	2	1	School Total
AHS	3	-	-	-	-	3
CHS	1	-	-	-	-	1
LLHS	1	-	-	1	-	2
MHS	-	-	-	-	-	-
Score Total	5	-	-	1	-	6
% of Tests	83%	0%	0%	17%	0%	100%

Acalanes Union High School District

2024 Assessment Report

Advanced Placement Exam Results – 2024 Latin

2024 Score	5	4	3	2	1	School Total
AHS	-	-	-	-	-	-
CHS	-	-	-	-	-	-
LLHS	-	-	-	-	-	-
MHS	-	4	6	2	-	12
Score Total	0	4	6	2	0	12
% of Tests	0%	33%	50%	17%	0%	100%

2023 Score	5	4	3	2	1	School Total
AHS	-	-	-	-	-	-
CHS	-	-	-	-	-	-
LLHS	-	-	-	-	-	-
MHS	-	2	5	5	-	12
Score Total	0	2	5	5	0	12
% of Tests	0%	16%	42%	42%	0%	100%

2022 Score	5	4	3	2	1	School Total
AHS	-	-	-	-	-	-
CHS	-	-	-	-	-	-
LLHS	-	-	-	-	-	-
MHS	1	2	2	1	-	6
Score Total	1	2	2	1	-	6
% of Tests	17%	33%	33%	17%	0%	100%

2021 Score	5	4	3	2	1	School Total
AHS	-	-	-	-	-	-
CHS	-	-	-	-	-	-
LLHS	-	-	-	-	-	-
MHS	1	5	6	3	2	17
Score Total	1	5	6	3	2	17
% of Tests	6%	29%	35%	18%	12%	100%

2020 Score	5	4	3	2	1	School Total
AHS	-	-	-	-	-	-
CHS	-	-	-	-	-	-
LLHS	-	-	-	-	-	-
MHS	1	6	14	6	3	30
Score Total	1	6	14	6	3	30
% of Tests	3%	20%	47%	20%	10%	100%

Acalanes Union High School District

2024 Assessment Report

Advanced Placement Exam Results – 2024 Macroeconomics

2024 Score	5	4	3	2	1	School Total
AHS	1	-	-	-	-	1
CHS	1	-	-	-	-	1
LLHS	29	36	19	7	2	93
MHS	17	35	32	19	1	104
Score Total	48	71	51	26	3	199
% of Tests	24%	36%	26%	13%	2%	100%

2023 Score	5	4	3	2	1	School Total
AHS	-	1	-	-	-	1
CHS	-	3	-	-	-	3
LLHS	12	17	23	5	-	57
MHS	8	22	35	26	6	97
Score Total	20	43	58	31	6	158
% of Tests	13%	27%	37%	20%	4%	100%

2022 Score

ACIS	1	-	-	1	-	2
AHS	-	-	-	-	1	1
CHS	-	1	-	-	-	1
LLHS	13	20	10	7	5	55
MHS	8	10	10	14	25	67
Score Total	22	31	20	22	31	126
% of Tests	17%	25%	16%	17%	25%	100%

2021 Score	5	4	3	2	1	School Total
AHS	1	-	-	1	-	2
CHS	3	-	-	-	-	3
LLHS	4	22	12	5	8	51
MHS	5	22	17	31	29	104
Score Total	13	44	29	37	37	160
% of Tests	8%	28%	18%	23%	23%	100%

2020 Score	5	4	3	2	1	School Total
AHS	-	-	-	-	-	-
CHS	1	-	-	-	-	1
LLHS	8	14	6	5	3	36
MHS	18	22	22	16	16	94
Score Total	27	36	28	21	19	131
% of Tests	21%	27%	21%	16%	15%	100%

Acalanes Union High School District

2024 Assessment Report

Advanced Placement Exam Results – 2024 Microeconomics

2024 Score	5	4	3	2	1	School Total
AHS	-	-	-	-	-	-
CHS	1	-	-	-	-	1
LLHS	-	-	-	-	-	-
MHS	-	-	1	1	-	2
Score Total	1	-	1	1	-	3
% of Tests	33%	0%	33%	33%	0%	100%

2023 Score	5	4	3	2	1	School Total
AHS	-	-	-	-	-	-
CHS	1	-	1	-	-	2
LLHS	-	-	-	-	-	-
MHS	1	-	-	1	-	2
Score Total	2	-	1	1	-	4
% of Tests	50%	0%	25%	25%	0%	100%

2022 Score	5	4	3	2	1	School Total
AHS	-	-	-	-	-	-
CHS	-	-	-	-	-	-
LLHS	1	-	-	1	-	1
MHS	1	2	1	1	1	6
Score Total	2	2	1	1	1	7
% of Tests	29%	29%	14%	14%	14%	100%

2021 Score	5	4	3	2	1	School Total
AHS	-	-	-	-	-	-
CHS	1	-	-	-	-	1
LLHS	-	1	1	1	-	3
MHS	1	-	-	-	-	1
Score Total	2	1	1	1	-	5
% of Tests	40%	20%	20%	20%	0%	100%

2020 Score	5	4	3	2	1	School Total
AHS	-	-	-	-	-	-
CHS	-	-	-	-	-	-
LLHS	-	-	-	-	-	-
MHS	-	-	-	-	-	-
Score Total	-	-	-	-	-	-
% of Tests	-	-	-	-	-	-

Acalanes Union High School District

2024 Assessment Report

Advanced Placement Exam Results – 2024 Music Theory

2024 Score	5	4	3	2	1	School Total
AHS	1	1	9	1	-	12
CHS	3	1	2	4	1	11
LLHS	-	-	-	-	-	-
MHS	-	-	-	-	-	-
Score Total	4	2	11	5	1	23
% of Tests	17%	9%	48%	22%	4%	100%

2023 Score	5	4	3	2	1	School Total
AHS	5	5	1	1	-	12
CHS	2	-	3	2	1	8
LLHS	3	6	7	2	2	20
MHS	2	3	4	-	-	9
Score Total	12	14	15	5	3	49
% of Tests	24%	29%	31%	10%	6%	100%

2022 Score	5	4	3	2	1	School Total
AHS	-	-	-	-	-	-
CHS	6	5	2	1	-	14
LLHS	-	-	-	-	-	-
MHS	3	5	5	-	-	13
Score Total	9	10	7	1	-	27
% of Tests	33%	37%	26%	4%	0%	100%

2021 Score	5	4	3	2	1	School Total
AHS	3	1	3	6	1	14
CHS	6	4	-	1	-	11
LLHS	1	2	6	6	3	18
MHS	5	4	2	2	-	13
Score Total	15	11	11	15	4	56
% of Tests	27%	20%	20%	27%	7%	100%

2020 Score	5	4	3	2	1	School Total
AHS	-	-	-	-	-	-
CHS	13	5	3	1	-	22
LLHS	-	-	-	-	-	-
MHS	5	5	6	-	-	16
Score Total	18	10	9	1	-	38
% of Tests	47%	26%	24%	3%	0%	100%

Acalanes Union High School District

2024 Assessment Report

Advanced Placement Exam Results – 2024 Physics 1

2024 Score	5	4	3	2	1	School Total
AHS	10	21	9	5	1	46
CHS	13	27	34	27	5	106
LLHS	11	17	22	14	2	66
MHS	37	28	9	1	-	75
Score Total	71	93	74	47	8	293
% of Tests	24%	32%	25%	16%	3%	100%

2023 Score	5	4	3	2	1	School Total
AHS	7	17	9	5	-	38
CHS	6	18	22	35	10	91
LLHS	9	14	24	23	2	72
MHS	31	27	15	7	1	81
Score Total	53	76	70	70	13	282
% of Tests	19%	27%	25%	25%	4%	100%

2022 Score	5	4	3	2	1	School Total
AHS	6	19	13	7	-	45
CHS	14	20	17	10	4	65
LLHS	8	16	15	13	8	60
MHS	11	26	12	1	1	51
Score Total	39	81	57	31	13	221
% of Tests	18%	37%	26%	14%	6%	100%

2021 Score	5	4	3	2	1	School Total
AHS	7	18	17	16	4	62
CHS	13	26	23	43	17	122
LLHS	2	18	15	22	8	65
MHS	11	19	23	16	1	70
Score Total	33	81	78	97	30	319
% of Tests	10%	25%	24%	30%	9%	100%

2020 Score	5	4	3	2	1	School Total
AHS	11	18	16	14	4	63
CHS	18	29	39	28	9	123
LLHS	12	20	27	17	5	81
MHS	15	27	22	12	3	79
Score Total	56	94	104	71	21	346
% of Tests	16%	27%	30%	21%	6%	100%

Acalanes Union High School District

2024 Assessment Report

Advanced Placement Exam Results – 2024 Physics 2

2024 Score	5	4	3	2	1	School Total
AHS	5	8	12	1	-	26
CHS	8	3	12	3	-	26
LLHS	13	8	9	5	-	35
MHS	11	11	12	2	-	36
Score Total	37	30	45	11	-	123
% of Tests	30%	24%	37%	9%	0%	100%

2023 Score	5	4	3	2	1	School Total
AHS	5	5	10	-	-	20
CHS	7	7	9	3	-	26
LLHS	1	5	15	7	-	28
MHS	6	8	12	3	-	29
Score Total	19	25	46	13	-	103
% of Tests	18%	24%	45%	13%	0%	100%

2022 Score	5	4	3	2	1	School Total
AHS	10	7	1	-	-	18
CHS	15	10	7	3	-	35
LLHS	3	8	18	2	-	31
MHS	8	6	9	7	-	30
Score Total	36	31	35	12	-	114
% of Tests	32%	27%	31%	10%	0%	100%

2021 Score	5	4	3	2	1	School Total
AHS	5	6	7	3	-	21
CHS	13	6	8	3	-	30
LLHS	2	5	5	2	-	14
MHS	2	4	8	3	-	17
Score Total	22	21	28	11	-	82
% of Tests	27%	26%	34%	13%	0%	100%

2020 Score	5	4	3	2	1	School Total
AHS	-	-	-	-	-	-
CHS	6	9	6	3	-	24
LLHS	-	-	-	-	-	-
MHS	-	-	-	-	-	-
Score Total	6	9	6	3	-	24
% of Tests	25%	38%	25%	13%	0%	100%

Acalanes Union High School District

2024 Assessment Report

Advanced Placement Exam Results – 2024 Physics C: Electricity & Magnetism

2024 Score	5	4	3	2	1	School Total
AHS	-	-	-	-	-	-
CHS	2	-	-	-	-	2
LLHS	-	1	-	-	-	1
MHS	1	1	-	1	-	3
Score Total	3	2	-	1	-	6
% of Tests	50%	33%	0%	17%	0%	100%

2023 Score	5	4	3	2	1	School Total
AHS	-	-	-	-	-	-
CHS	2	-	-	-	-	2
LLHS	-	-	-	-	-	-
MHS	1	-	-	1	-	2
Score Total	3	-	-	1	-	4
% of Tests	75%	0%	0%	25%	0%	100%

2022 Score	5	4	3	2	1	School Total
AHS	-	-	-	-	-	-
CHS	2	-	-	-	-	2
LLHS	-	1	-	-	-	1
MHS	-	-	-	-	-	-
Score Total	2	1	-	-	-	3
% of Tests	67%	33%	0%	0%	0%	100%

2021 Score	5	4	3	2	1	School Total
AHS	-	-	-	-	-	-
CHS	-	1	-	-	-	1
LLHS	1	1	-	1	-	3
MHS	-	-	-	-	-	-
Score Total	1	2	-	1	-	4
% of Tests	25%	50%	0%	25%	0%	100%

2020 Score	5	4	3	2	1	School Total
AHS	-	-	-	-	-	-
CHS	1	-	-	-	-	1
LLHS	-	1	1	-	-	2
MHS	5	6	8	4	2	25
Score Total	6	7	9	4	2	28
% of Tests	21%	25%	32%	14%	7%	100%

Acalanes Union High School District

2024 Assessment Report

Advanced Placement Exam Results – 2024 Physics C: Mechanics

2024 Score	5	4	3	2	1	School Total
AHS	-	-	-	-	-	-
CHS	2	-	1	1	-	4
LLHS	3	14	9	4	2	31
MHS	2	-	1	-	-	3
Score Total	7	14	11	5	1	38
% of Tests	18%	37%	29%	13%	3%	100%

2023 Score	5	4	3	2	1	School Total
AHS	-	-	-	-	-	-
CHS	3	1	1	-	-	5
LLHS	9	5	4	-	-	18
MHS	-	1	1	-	-	2
Score Total	12	7	6	-	-	25
% of Tests	48%	28%	24%	0%	0%	100%

2022 Score	5	4	3	2	1	School Total
AHS	-	-	-	-	-	-
CHS	1	-	-	-	-	1
LLHS	4	2	3	1	2	12
MHS	1	-	1	-	-	2
Score Total	6	2	4	1	2	15
% of Tests	40%	13%	27%	7%	13%	100%

2021 Score	5	4	3	2	1	School Total
AHS	-	1	-	-	-	1
CHS	2	-	-	-	-	2
LLHS	3	5	7	5	2	22
MHS	-	1	-	-	-	1
Score Total	5	7	7	5	2	26
% of Tests	19%	27%	27%	19%	8%	100%

2020 Score	5	4	3	2	1	School Total
AHS	-	-	-	-	-	-
CHS	1	-	-	-	-	1
LLHS	13	8	6	3	1	31
MHS	11	8	4	1	-	24
Score Total	25	16	10	4	1	56
% of Tests	45%	29%	18%	7%	2%	100%

Acalanes Union High School District

2024 Assessment Report

Advanced Placement Exam Results – 2024 Psychology

2024 Score	5	4	3	2	1	School Total
AHS	3	8	12	7	5	35
CHS	63	37	11	4	5	120
LLHS	38	29	7	4	1	79
MHS	29	25	31	6	-	91
Score Total	133	99	61	21	11	325
% of Tests	41%	30%	19%	6%	3%	100%

2023 Score	5	4	3	2	1	School Total
AHS	1	7	6	3	3	20
CHS	71	34	14	2	2	123
LLHS	15	17	7	2	3	44
MHS	9	23	15	3	11	61
Score Total	96	81	42	10	19	248
% of Tests	39%	33%	17%	4%	8%	100%

2022 Score	5	4	3	2	1	School Total
AHS	2	4	6	5	4	21
CHS	77	35	21	7	4	144
LLHS	16	16	9	6	2	49
MHS	4	4	6	5	1	20
Score Total	99	59	42	23	10	233
% of Tests	42%	25%	18%	10%	4%	100%

2021 Score	5	4	3	2	1	School Total
AHS	4	8	7	7	8	34
CHS	41	46	26	11	9	133
LLHS	11	15	8	3	2	39
MHS	3	9	6	8	8	34
Score Total	59	78	47	29	27	240
% of Tests	25%	33%	20%	12%	11%	100%

2020 Score	5	4	3	2	1	School Total
AHS	4	5	4	-	3	16
CHS	47	41	30	4	8	130
LLHS	16	32	13	11	7	79
MHS	21	26	30	8	5	90
Score Total	88	104	77	23	23	315
% of Tests	28%	33%	24%	7%	7%	100%

Acalanes Union High School District

2024 Assessment Report

Advanced Placement Exam Results – 2024 Spanish Language and Culture

2024 Score	5	4	3	2	1	School Total
AHS	6	12	10	1	-	29
CHS	13	10	8	-	-	31
LLHS	6	12	8	2	1	29
MHS	18	29	10	-	-	57
Score Total	43	63	36	3	1	146
% of Tests	29%	43%	25%	1%	1%	100%

2023 Score	5	4	3	2	1	School Total
AHS	13	28	11	2	-	54
CHS	8	10	4	-	-	22
LLHS	5	6	2	1	-	14
MHS	20	26	12	3	-	61
Score Total	46	70	29	6	-	151
% of Tests	30%	46%	19%	4%	0%	100%

2022 Score	5	4	3	2	1	School Total
AHS	8	12	16	4	-	40
CHS	11	5	3	-	-	19
LLHS	8	4	9	2	-	23
MHS	15	25	20	3	-	63
Score Total	42	46	48	9	-	145
% of Tests	29%	32%	33%	6%	0%	100%

2021 Score	5	4	3	2	1	School Total
ACIS	-	1	-	-	-	1
AHS	13	19	15	6	-	53
CHS	9	11	5	-	-	25
LLHS	5	2	7	1	-	15
MHS	16	37	29	1	-	83
Score Total	43	70	56	8	-	177
% of Tests	24%	40%	32%	5%	0%	100%

2020 Score	5	4	3	2	1	School Total
AHS	13	29	7	-	-	49
CHS	8	14	3	-	-	25
LLHS	3	10	6	-	-	19
MHS	23	27	15	2	-	67
Score Total	47	80	31	2	-	160
% of Tests	29%	50%	19%	0%	0%	100%

Acalanes Union High School District

2024 Assessment Report

Advanced Placement Exam Results – 2024 Statistics

2024 Score	5	4	3	2	1	School Total
AHS	3	8	10	2	1	24
CHS	44	29	7	3	-	83
LLHS	16	30	31	13	2	92
MHS	34	15	3	-	-	52
Score Total	97	82	51	18	3	251
% of Tests	39%	33%	20%	7%	1%	100%

2023 Score	5	4	3	2	1	School Total
AHS	7	16	6	5	1	35
CHS	15	14	4	1	-	34
LLHS	19	21	27	17	10	94
MHS	39	16	10	3	-	68
Score Total	80	67	47	26	11	231
% of Tests	35%	29%	20%	11%	5%	100%

2022 Score	5	4	3	2	1	School Total
AHS	7	15	5	2	1	30
CHS	42	32	13	5	1	93
LLHS	18	20	21	18	5	82
MHS	28	20	9	1	-	58
Score Total	95	87	48	26	7	263
% of Tests	36%	33%	18%	10%	3%	100%

2021 Score	5	4	3	2	1	School Total
AHS	2	8	3	5	2	20
CHS	17	15	6	6	4	48
LLHS	18	15	20	15	6	74
MHS	26	21	12	4	-	63
Score Total	63	59	41	30	12	205
% of Tests	31%	29%	20%	15%	6%	100%

2020 Score	5	4	3	2	1	School Total
AHS	13	8	6	7	2	36
CHS	10	17	5	5	3	40
LLHS	5	14	24	21	18	82
MHS	34	25	11	3	1	74
Score Total	62	64	46	36	24	232
% of Tests	27%	28%	20%	16%	10%	100%

Acalanes Union High School District

2024 Assessment Report

Advanced Placement Exam Results – 2024 United States Government and Politics

2024 Score	5	4	3	2	1	School Total
AHS	-	-	-	-	-	-
CHS	-	-	-	-	-	-
LLHS	2	5	5	3	-	15
MHS	-	-	-	-	-	-
Score Total	2	5	5	3	-	15
% of Tests	13%	33%	33%	20%	0%	100%

2023 Score	5	4	3	2	1	School Total
AHS	-	-	-	-	-	-
CHS	-	-	-	-	-	-
LLHS	4	6	12	10	4	36
MHS	-	-	-	-	-	-
Score Total	4	6	12	10	4	36
% of Tests	11%	17%	33%	28%	11%	100%

2022 Score	5	4	3	2	1	School Total
ACIS	-	1	-	-	-	1
AHS	-	-	1	-	-	1
CHS	-	-	-	-	-	-
LLHS	6	7	13	15	2	43
MHS	1	-	-	-	-	1
Score Total	7	8	14	15	2	46
% of Tests	15%	17%	30%	33%	4%	100%

2021 Score	5	4	3	2	1	School Total
AHS	-	-	1	-	-	1
CHS	-	-	-	-	-	-
LLHS	4	8	23	10	4	49
MHS	-	1	-	-	-	1
Score Total	4	9	23	10	4	50
% of Tests	8%	18%	46%	20%	8%	100%

2020 Score	5	4	3	2	1	School Total
AHS	-	-	-	-	-	-
CHS	-	-	-	-	-	-
LLHS	8	7	6	8	3	32
MHS	-	-	-	-	-	-
Score Total	8	7	6	8	3	32
% of Tests	25%	22%	19%	25%	9%	100%

Acalanes Union High School District

2024 Assessment Report

Advanced Placement Exam Results – 2024 United States History

2024 Score	5	4	3	2	1	School Total
ACIS	-	3	-	-	-	3
AHS	38	54	13	4	2	111
CHS	19	10	-	-	-	29
LLHS	30	38	8	1	-	77
MHS	74	55	8	1	-	138
Score Total	161	158	29	6	2	356
% of Tests	45%	44%	8%	2%	1%	100%

2023 Score	5	4	3	2	1	School Total
ACIS	-	-	2	-	-	2
AHS	34	28	12	8	3	96
CHS	37	13	11	4	-	65
LLHS	18	23	16	16	7	80
MHS	59	40	25	12	4	140
Score Total	147	104	75	40	14	380
% of Tests	39%	27%	20%	11%	4%	100%

2022 Score	5	4	3	2	1	School Total
ACIS	1	-	1	1	-	3
AHS	28	27	32	9	3	99
CHS	34	22	20	11	2	89
LLHS	27	24	20	17	10	98
MHS	44	30	23	19	6	122
Score Total	134	103	95	57	21	410
% of Tests	33%	25%	23%	14%	5%	100%

2021 Score	5	4	3	2	1	School Total
ACIS	-	1	-	-	1	2
AHS	6	12	15	6	2	41
CHS	17	17	6	2	2	44
LLHS	12	25	25	19	10	91
MHS	41	47	32	31	16	167
Score Total	76	101	78	58	31	344
% of Tests	22%	29%	23%	17%	9%	100%

Acalanes Union High School District

2024 Assessment Report

2020 Score	5	4	3	2	1	School Total
ACIS	1	-	-	1	1	3
AHS	26	17	20	8	1	72
CHS	30	15	13	5	-	63
LLHS	29	46	29	7	3	114
MHS	52	41	34	8	2	137
Score Total	138	119	96	29	7	389
% of Tests	35%	31%	29%	7%	2%	100%

Acalanes Union High School District

2024 Assessment Report

Advanced Placement Exam Results – 2024 World History: Modern

2024 Score	5	4	3	2	1	School Total
AHS	-	1	-	-	-	1
CHS	-	-	-	-	-	-
LLHS	1	-	-	-	-	1
MHS	31	18	5	2	-	56
Score Total	32	19	5	2	-	58
% of Tests	55%	33%	9%	3%	0%	100%

2023 Score	5	4	3	2	1	School Total
AHS	-	-	-	-	-	-
CHS	-	-	-	-	-	-
LLHS	-	1	-	-	-	1
MHS	21	15	5	2	-	43
Score Total	21	16	5	2	-	44
% of Tests	21%	16%	11%	5%	0%	100%

2022 Score	5	4	3	2	1	School Total
AHS	-	-	-	-	-	-
CHS	-	1	-	-	-	1
LLHS	-	-	-	-	-	-
MHS	24	14	9	2	-	49
Score Total	24	15	18	4	-	50
% of Tests	48%	30%	18%	4%	0%	100%

2021 Score	5	4	3	2	1	School Total
AHS						
CHS						
LLHS						
MHS						
Score Total						
% of Tests						

2020 Score	5	4	3	2	1	School Total
AHS						
CHS						
LLHS						
MHS						
Score Total						
% of Tests						